

Karl Suss ACS 300 Gen 2 Coater Developer

Asset ID: 56869

Configuration:

Karl Suss ACS 300 Gen 2 Coater Developer

- Resist used: HD4100
 - Solvents: A515 & C620
 - Wafertec Resist pump
- 2014 Vintage



More Photos on Following Pages

To our knowledge, the information contained in this data sheet is accurate, but it may contain errors and we do not warrant the completeness or accuracy of this data.

Interested parties may contact Bridge Tronic Global for additional information at +1 949.396.1395 or sales@bridgetronic.com

Visit our website at: www.bridgetronic.com



QUICK
LEAD TIMES



QUALITY
EQUIPMENT



COMPETITIVE
PRICING



Interested parties may contact Bridge Tronic Global for additional information at +1 949.396.1395 or sales@bridgetronic.com



QUICK
LEAD TIMES



QUALITY
EQUIPMENT



COMPETITIVE
PRICING



Interested parties may contact Bridge Tronic Global for additional information at +1 949.396.1395 or sales@bridgetronic.com



QUICK
LEAD TIMES



QUALITY
EQUIPMENT



COMPETITIVE
PRICING



Interested parties may contact Bridge Tronic Global for additional information at +1 949.396.1395 or sales@bridgetronic.com



QUICK
LEAD TIMES

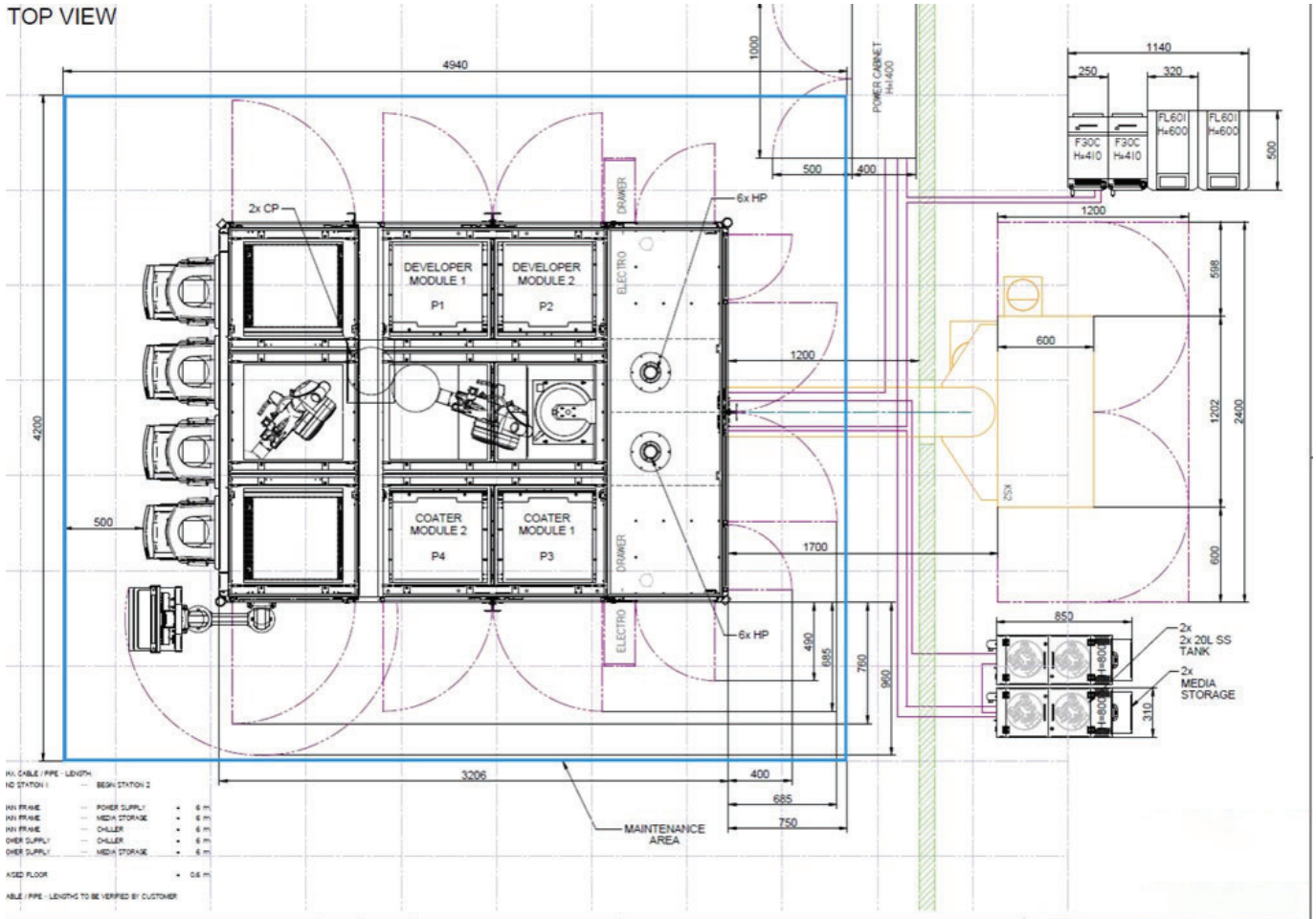


QUALITY
EQUIPMENT



COMPETITIVE
PRICING

TOP VIEW



Interested parties may contact Bridge Tronic Global for additional information at +1 949.396.1395 or sales@bridgetronic.com



QUICK
LEAD TIMES

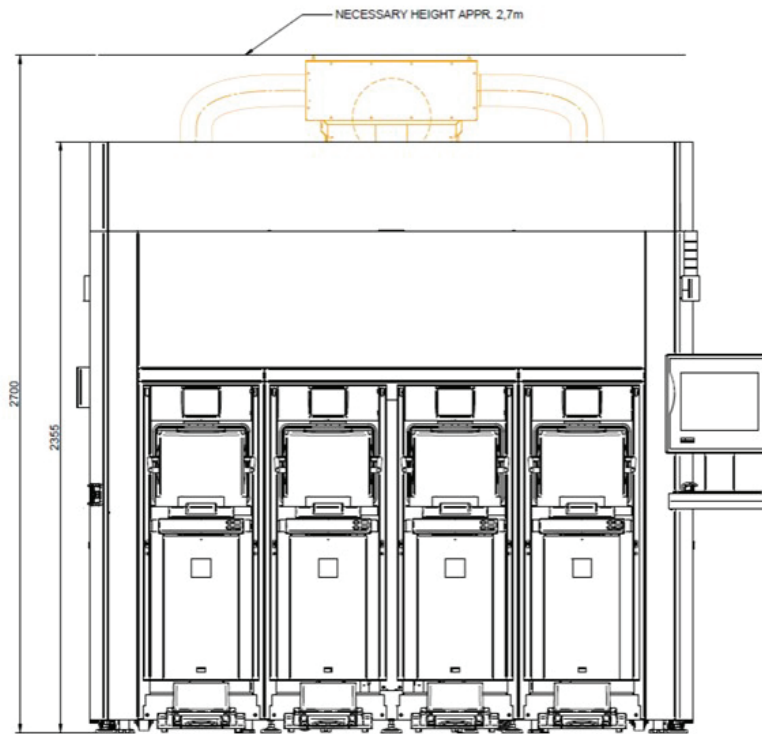


QUALITY
EQUIPMENT



COMPETITIVE
PRICING

FRONT VIEW



Interested parties may contact Bridge Tronic Global for additional information at +1 949.396.1395 or sales@bridgetronic.com



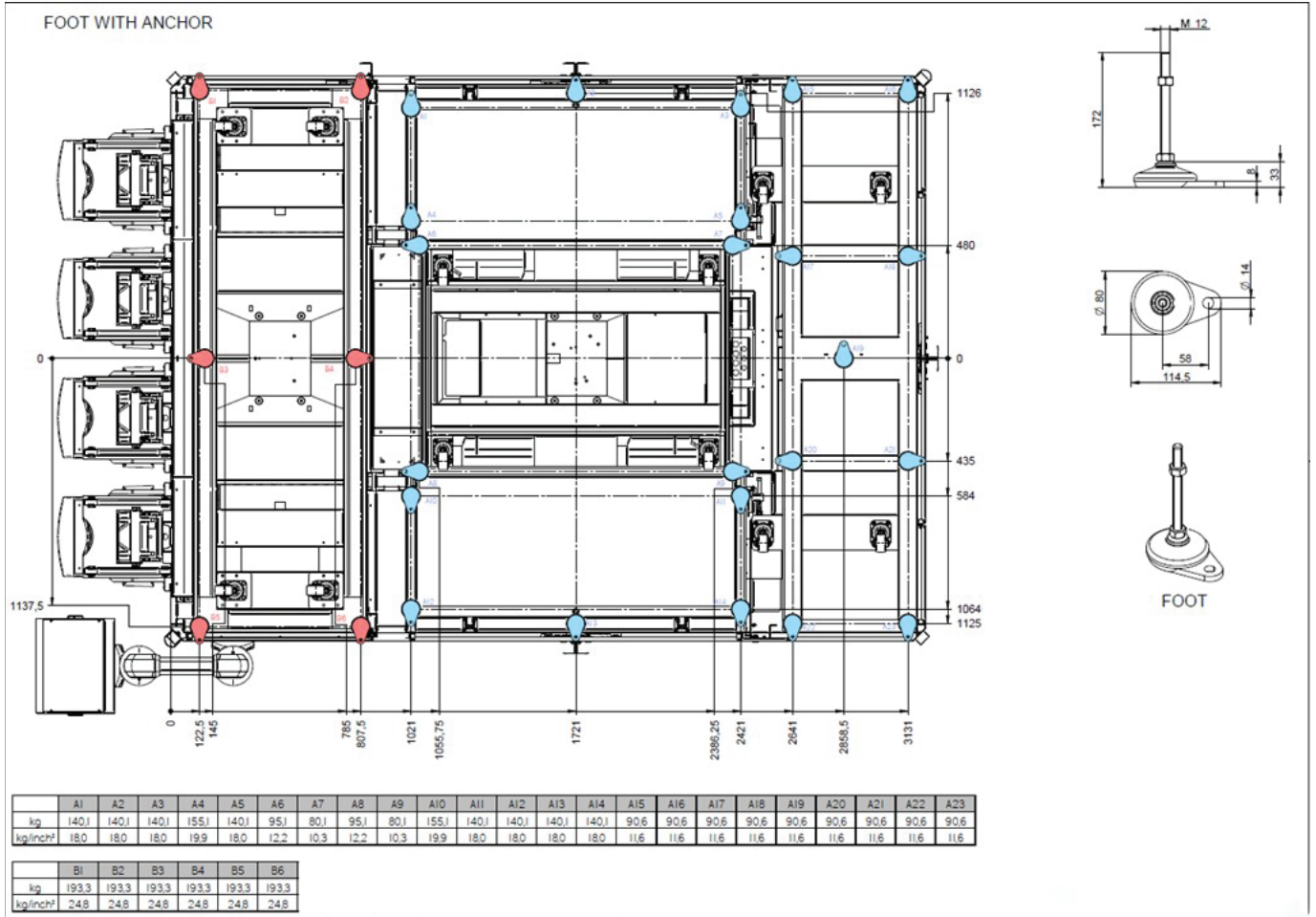
QUICK
LEAD TIMES



QUALITY
EQUIPMENT



COMPETITIVE
PRICING



Interested parties may contact Bridge Tronic Global for additional information at +1 949.396.1395 or sales@bridgetronic.com



QUICK
LEAD TIMES



QUALITY
EQUIPMENT



COMPETITIVE
PRICING