

Oxford Plasmalab 100 ICP-RIE

Asset ID: 45031

Configuration:

Oxford Plasmalab 100 ICP-RIE

Optional Accessories:

- Edwards iGX100N Pump
- Alcatel ATH 1600M Pump

Known Problems:

- The roughing valve for the main chamber is leaking. This is a recent issue and it has not been addressed yet as the chamber vacuum is still reasonable for etch processes (around $10E-6$ Torr).
- Heating for the pump-down line is not operational due to a broken controller. This does not affect the processes.
- The wafer transition to the system is not reliable and to address this we are using 6 inch Al plates to fix our wafers and samples on. This is not optimal for sample cooling but it works well for us and we currently do not experience wafer mishandling.
- We currently operate the wide temperature electrode only at room temperature as the system operation at other temperatures was unreliable and presently we do not really need sample processing at other temperatures.

More Photos on Following Pages

To our knowledge, the information contained in this data sheet is accurate, but it may contain errors and we do not warrant the completeness or accuracy of this data.

Interested parties may contact Bridge Tronic Global for additional information at +1 949.396.1395 or sales@bridgetronic.com

Visit our website at: www.bridgetronic.com



QUICK
LEAD TIMES



QUALITY
EQUIPMENT



COMPETITIVE
PRICING



Interested parties may contact Bridge Tronic Global for additional information at +1 949.396.1395 or sales@bridgetronic.com



QUICK
LEAD TIMES



QUALITY
EQUIPMENT



COMPETITIVE
PRICING



Interested parties may contact Bridge Tronic Global for additional information at +1 949.396.1395 or sales@bridgetronic.com



QUICK
LEAD TIMES



QUALITY
EQUIPMENT



COMPETITIVE
PRICING



Interested parties may contact Bridge Tronic Global for additional information at +1 949.396.1395 or sales@bridgetronic.com



QUICK
LEAD TIMES



QUALITY
EQUIPMENT



COMPETITIVE
PRICING



Interested parties may contact Bridge Tronic Global for additional information at +1 949.396.1395 or sales@bridgetronic.com



QUICK
LEAD TIMES



QUALITY
EQUIPMENT



COMPETITIVE
PRICING



Interested parties may contact Bridge Tronic Global for additional information at +1 949.396.1395 or sales@bridgetronic.com



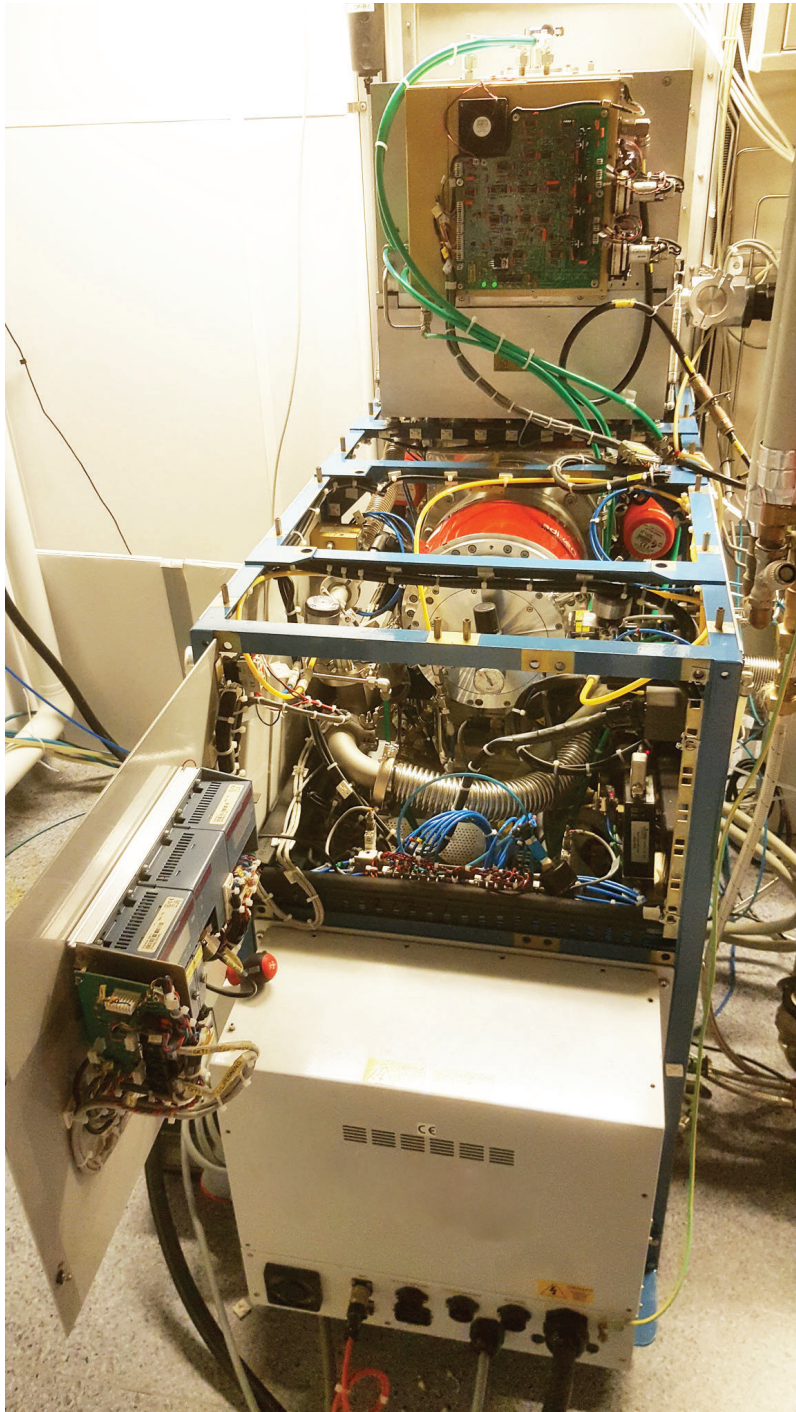
QUICK
LEAD TIMES



QUALITY
EQUIPMENT



COMPETITIVE
PRICING



Interested parties may contact Bridge Tronic Global for additional information at +1 949.396.1395 or sales@bridgetronic.com



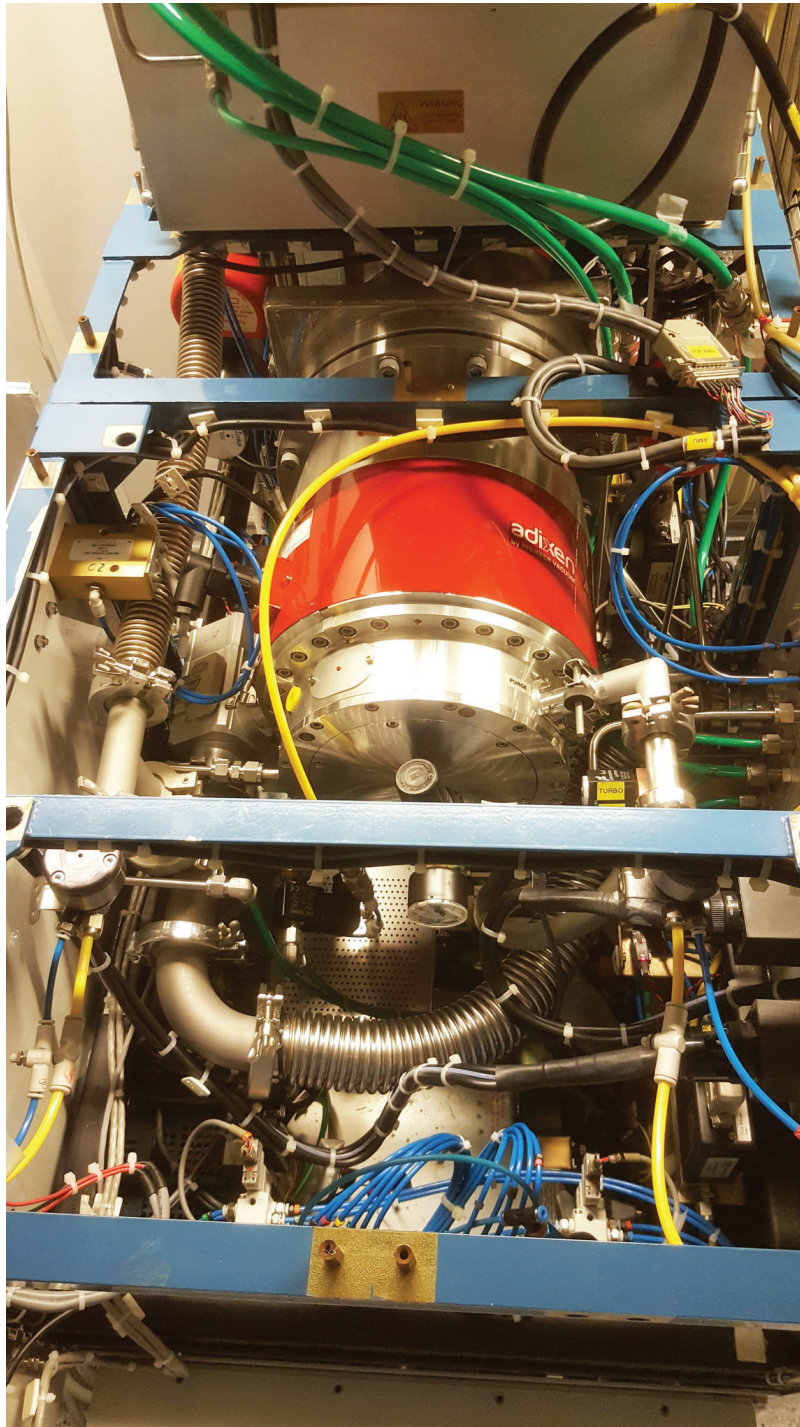
QUICK
LEAD TIMES



QUALITY
EQUIPMENT



COMPETITIVE
PRICING



Interested parties may contact Bridge Tronic Global for additional information at +1 949.396.1395 or sales@bridgetronic.com



QUICK
LEAD TIMES



QUALITY
EQUIPMENT



COMPETITIVE
PRICING



Interested parties may contact Bridge Tronic Global for additional information at +1 949.396.1395 or sales@bridgetronic.com



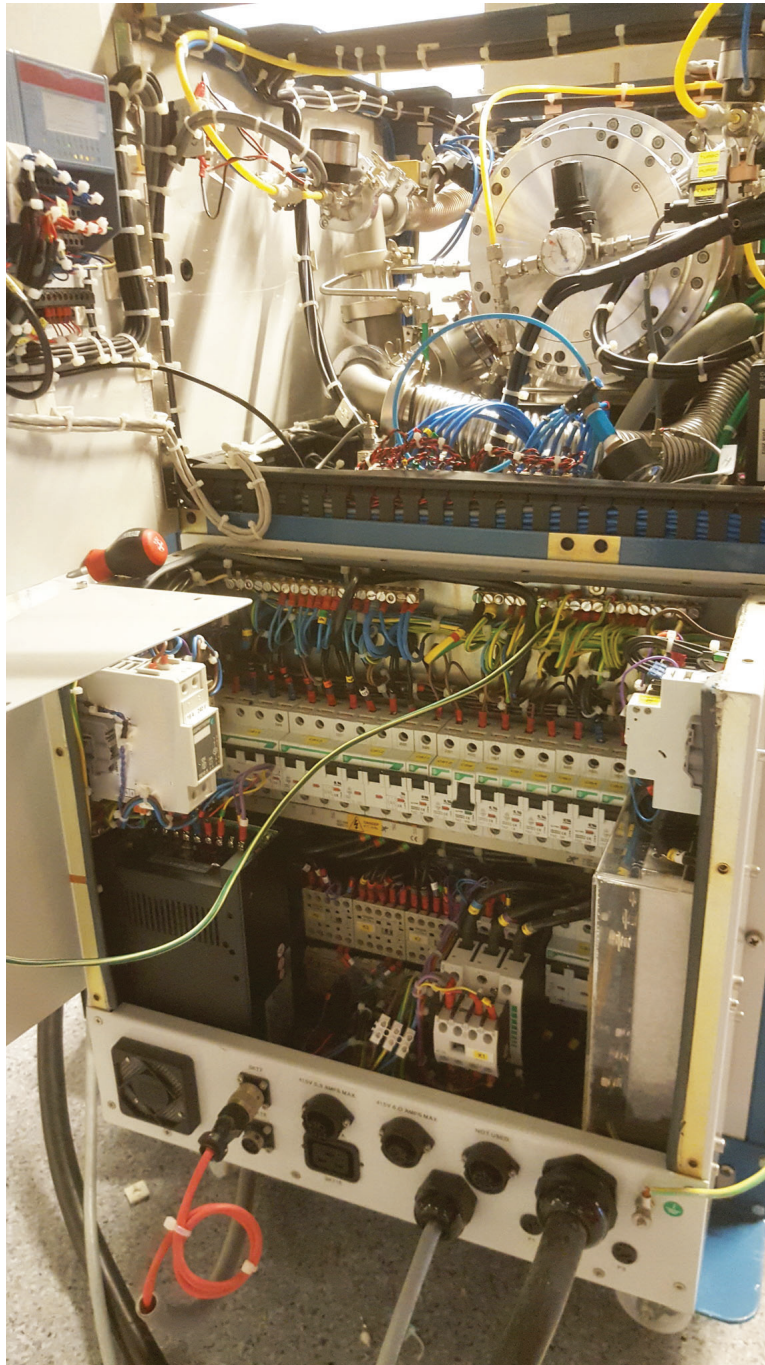
QUICK
LEAD TIMES



QUALITY
EQUIPMENT



COMPETITIVE
PRICING



Interested parties may contact Bridge Tronic Global for additional information at +1 949.396.1395 or sales@bridgetronic.com



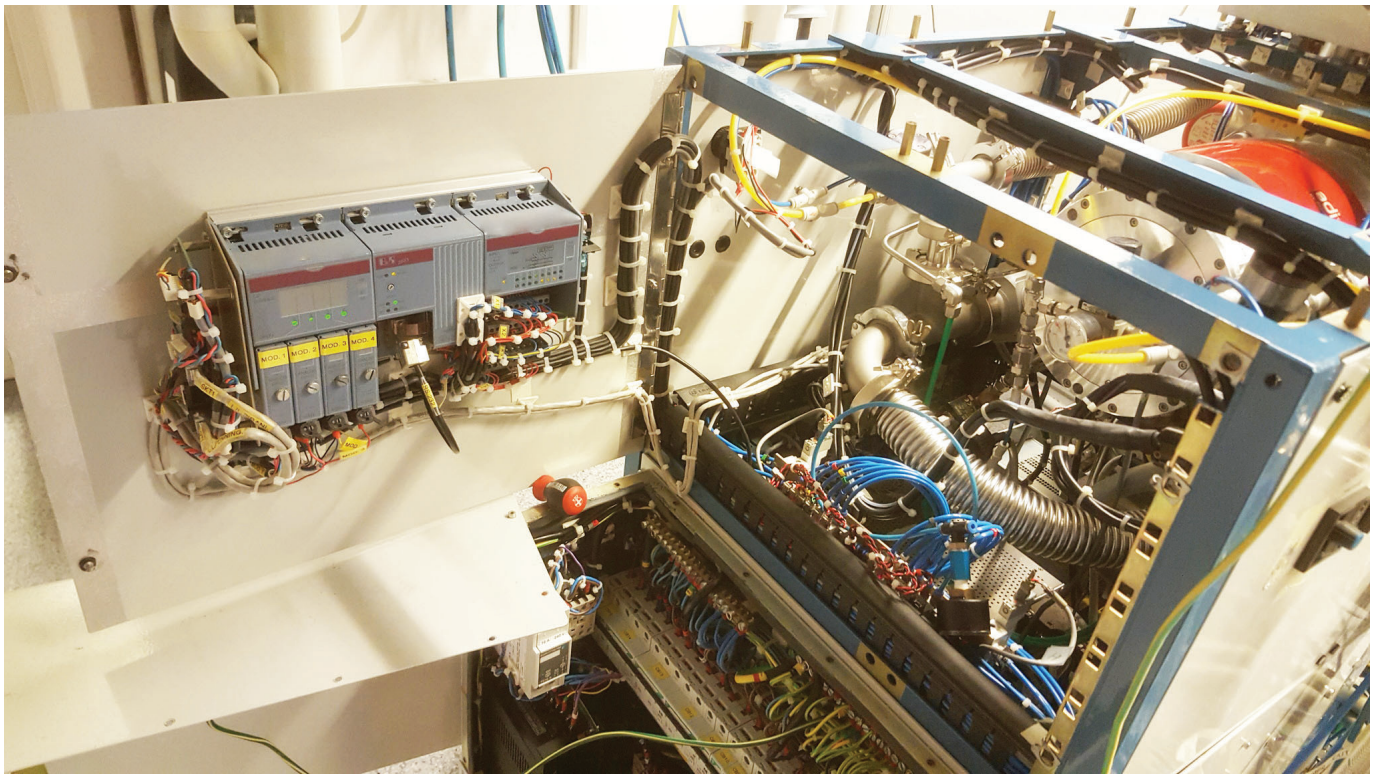
QUICK
LEAD TIMES



QUALITY
EQUIPMENT



COMPETITIVE
PRICING



Interested parties may contact Bridge Tronic Global for additional information at +1 949.396.1395 or sales@bridgetronic.com



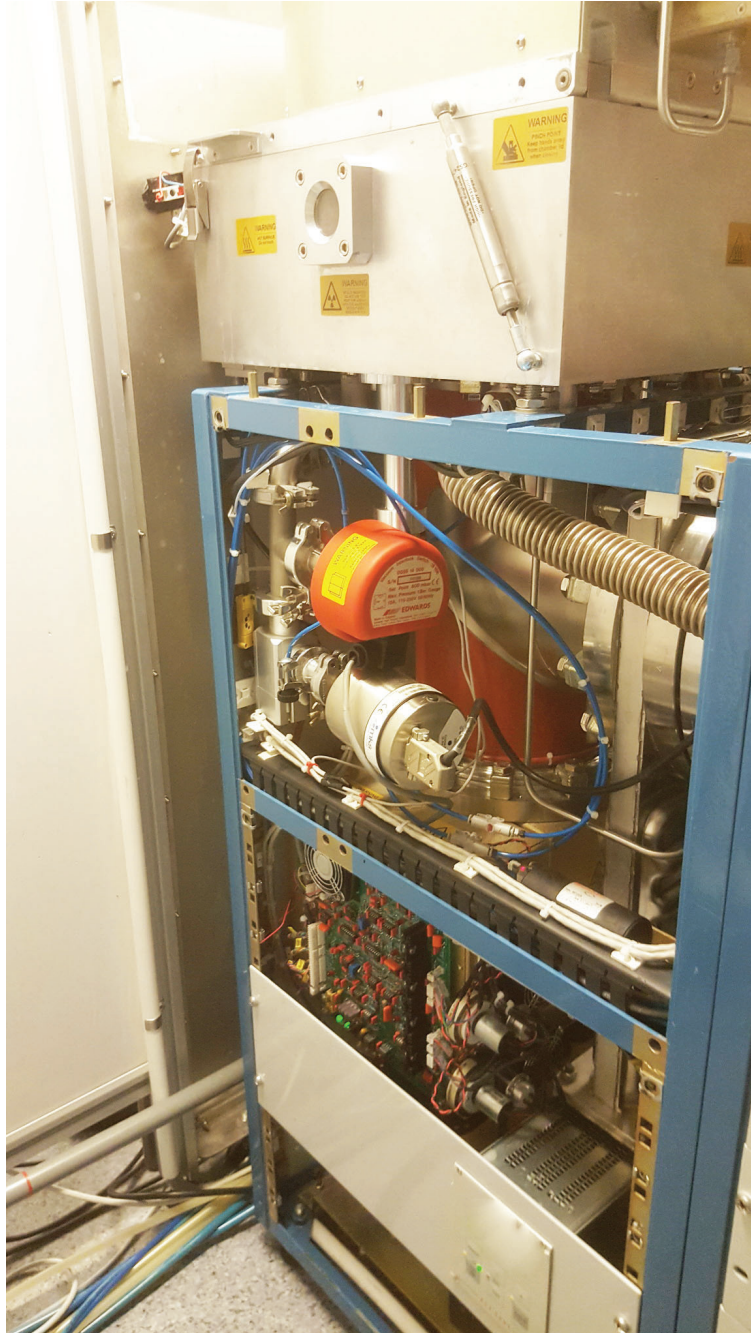
QUICK
LEAD TIMES



QUALITY
EQUIPMENT



COMPETITIVE
PRICING



Interested parties may contact Bridge Tronic Global for additional information at +1 949.396.1395 or sales@bridgetronic.com



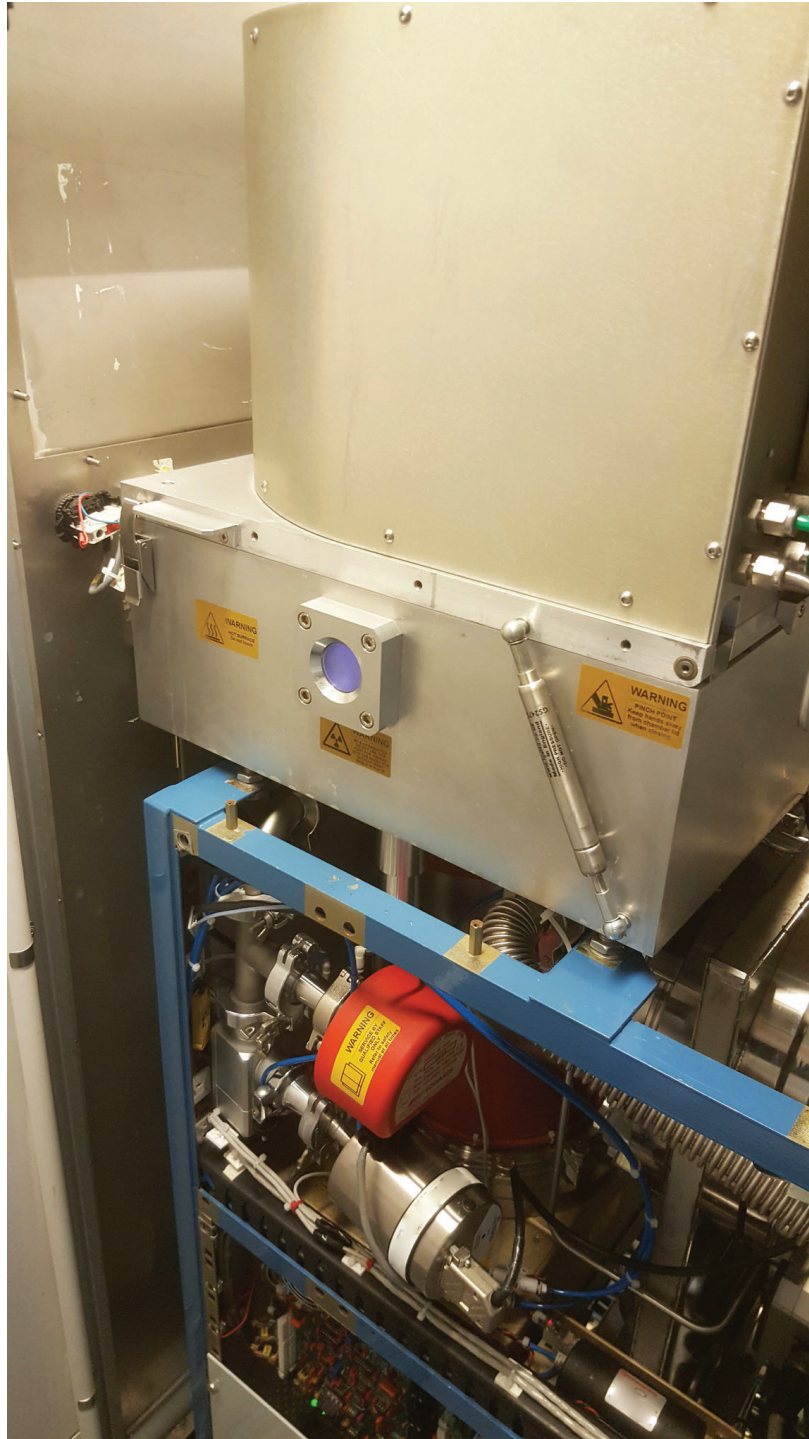
QUICK
LEAD TIMES



QUALITY
EQUIPMENT



COMPETITIVE
PRICING



Interested parties may contact Bridge Tronic Global for additional information at +1 949.396.1395 or sales@bridgetronic.com



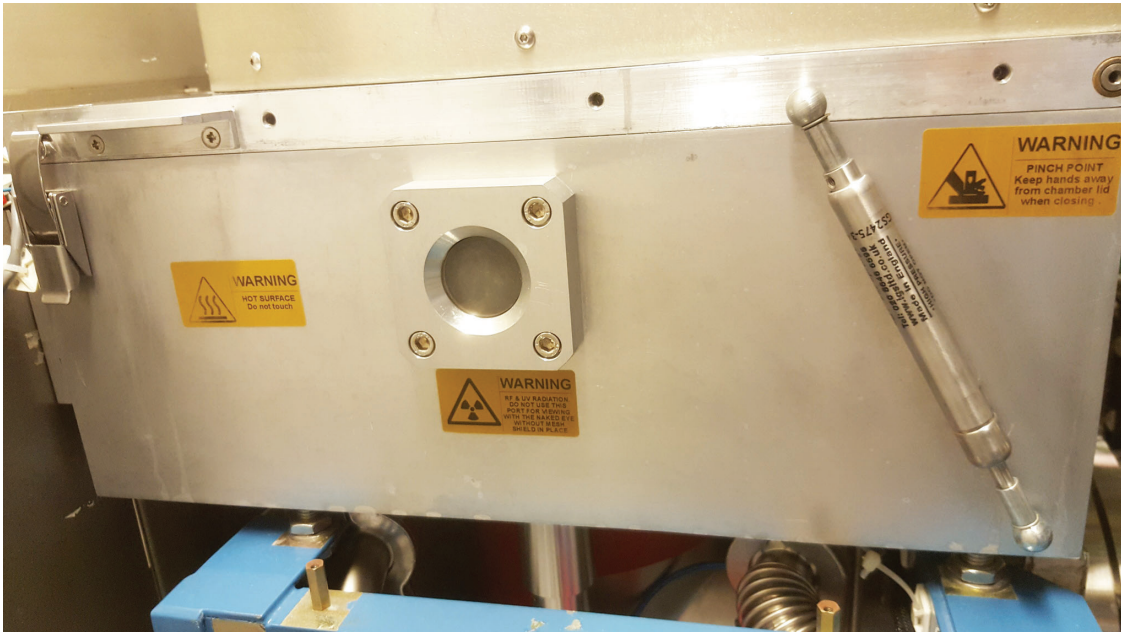
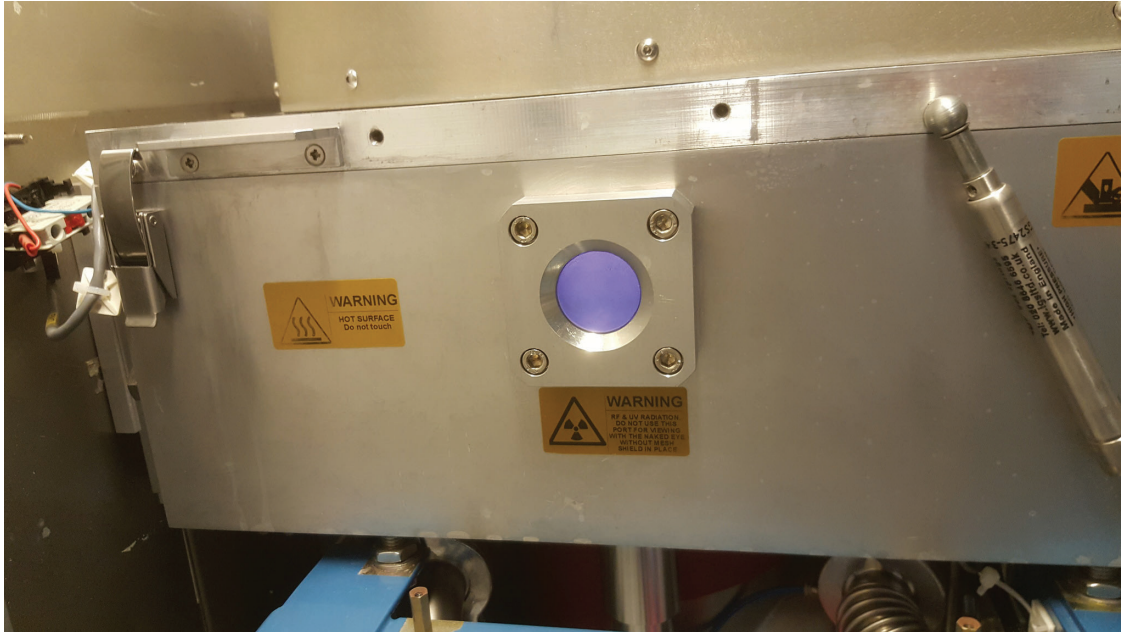
QUICK
LEAD TIMES



QUALITY
EQUIPMENT



COMPETITIVE
PRICING



Interested parties may contact Bridge Tronic Global for additional information at +1 949.396.1395 or sales@bridgetronic.com



QUICK
LEAD TIMES

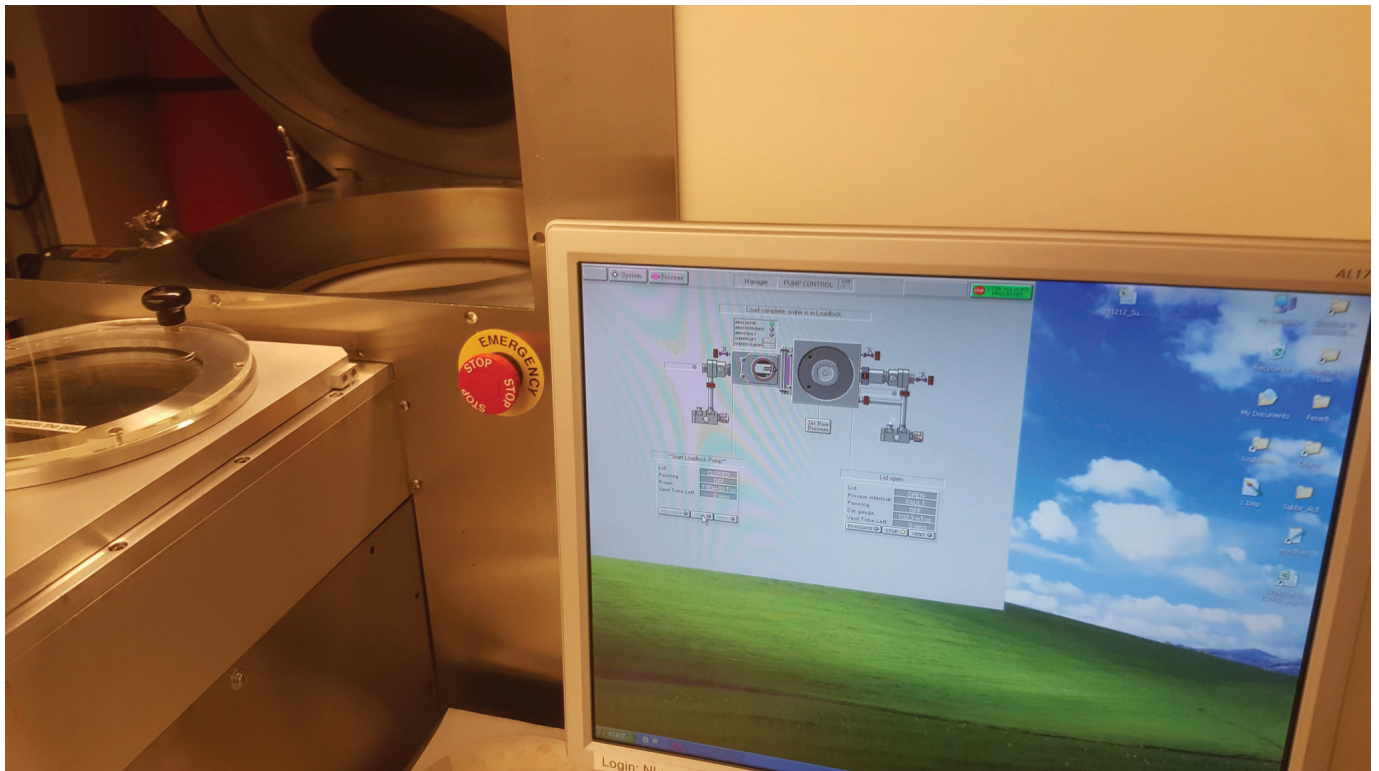


QUALITY
EQUIPMENT



COMPETITIVE
PRICING

BT Bridge Tronic — G L O B A L —



Interested parties may contact Bridge Tronic Global for additional information at +1 949.396.1395 or sales@bridgetronic.com



QUICK
LEAD TIMES



QUALITY
EQUIPMENT



COMPETITIVE
PRICING

1001 W 17th Street, Suite B | Costa Mesa, CA 92627 USA | Office: +1 949.396.1395

BT Bridge Tronic — G L O B A L —



Interested parties may contact Bridge Tronic Global for additional information at +1 949.396.1395 or sales@bridgetronic.com



QUICK
LEAD TIMES

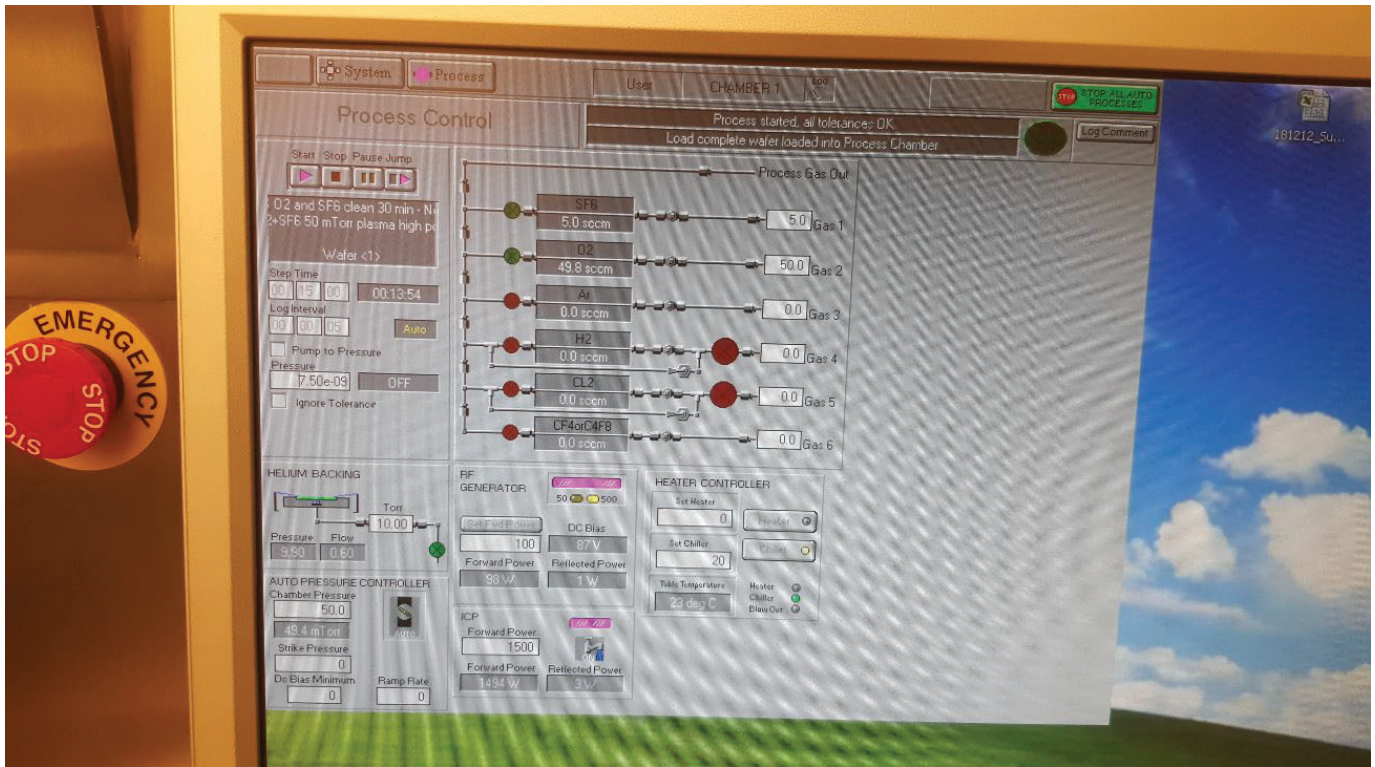


QUALITY
EQUIPMENT



COMPETITIVE
PRICING

1001 W 17th Street, Suite B | Costa Mesa, CA 92627 USA | Office: +1 949.396.1395



Interested parties may contact Bridge Tronic Global for additional information at +1 949.396.1395 or sales@bridgetronic.com



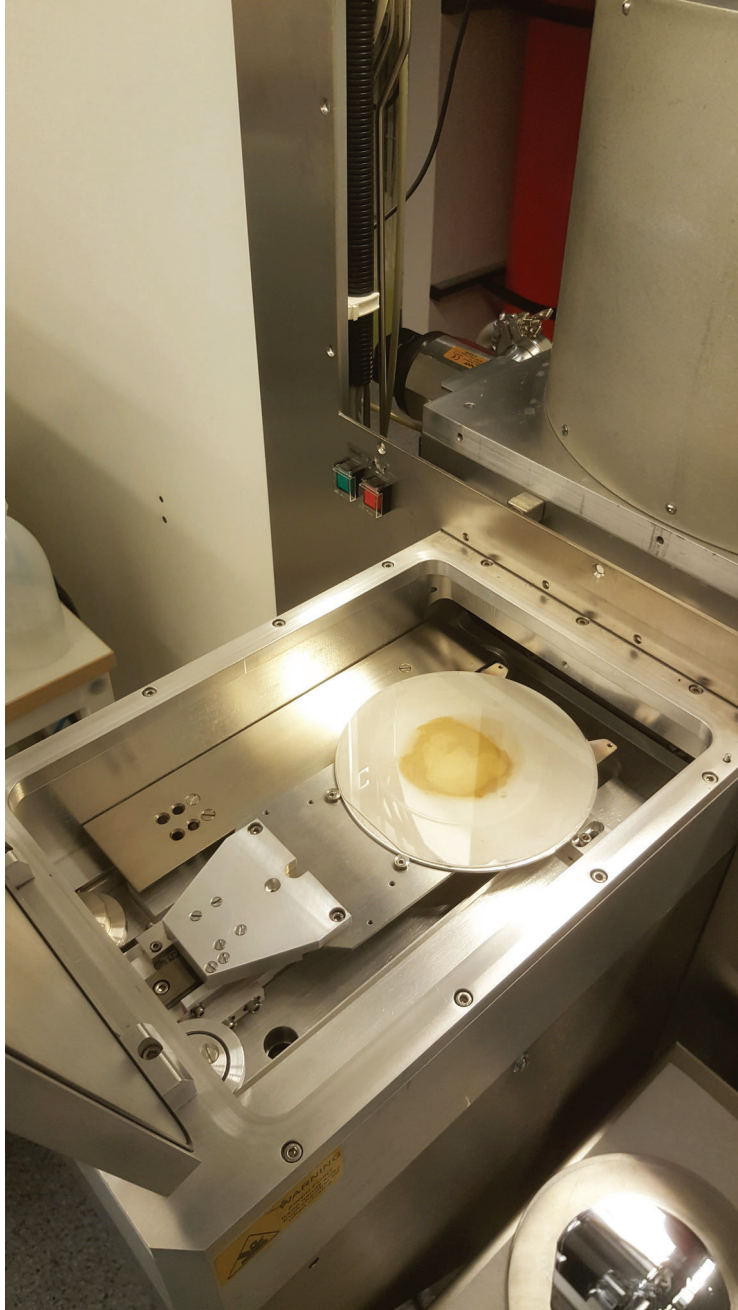
QUICK
LEAD TIMES



QUALITY
EQUIPMENT



COMPETITIVE
PRICING



Interested parties may contact Bridge Tronic Global for additional information at +1 949.396.1395 or sales@bridgetronic.com



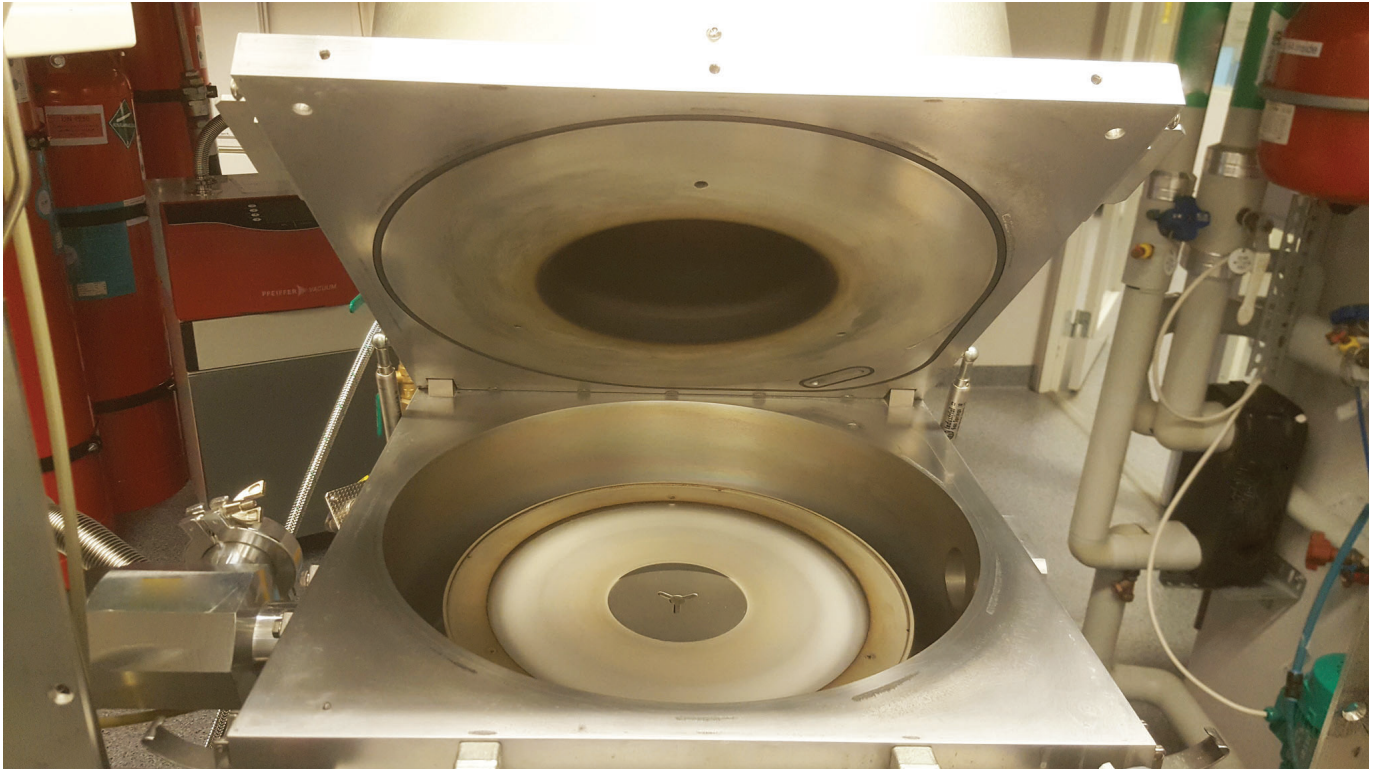
QUICK
LEAD TIMES



QUALITY
EQUIPMENT



COMPETITIVE
PRICING



Interested parties may contact Bridge Tronic Global for additional information at +1 949.396.1395 or sales@bridgetronic.com



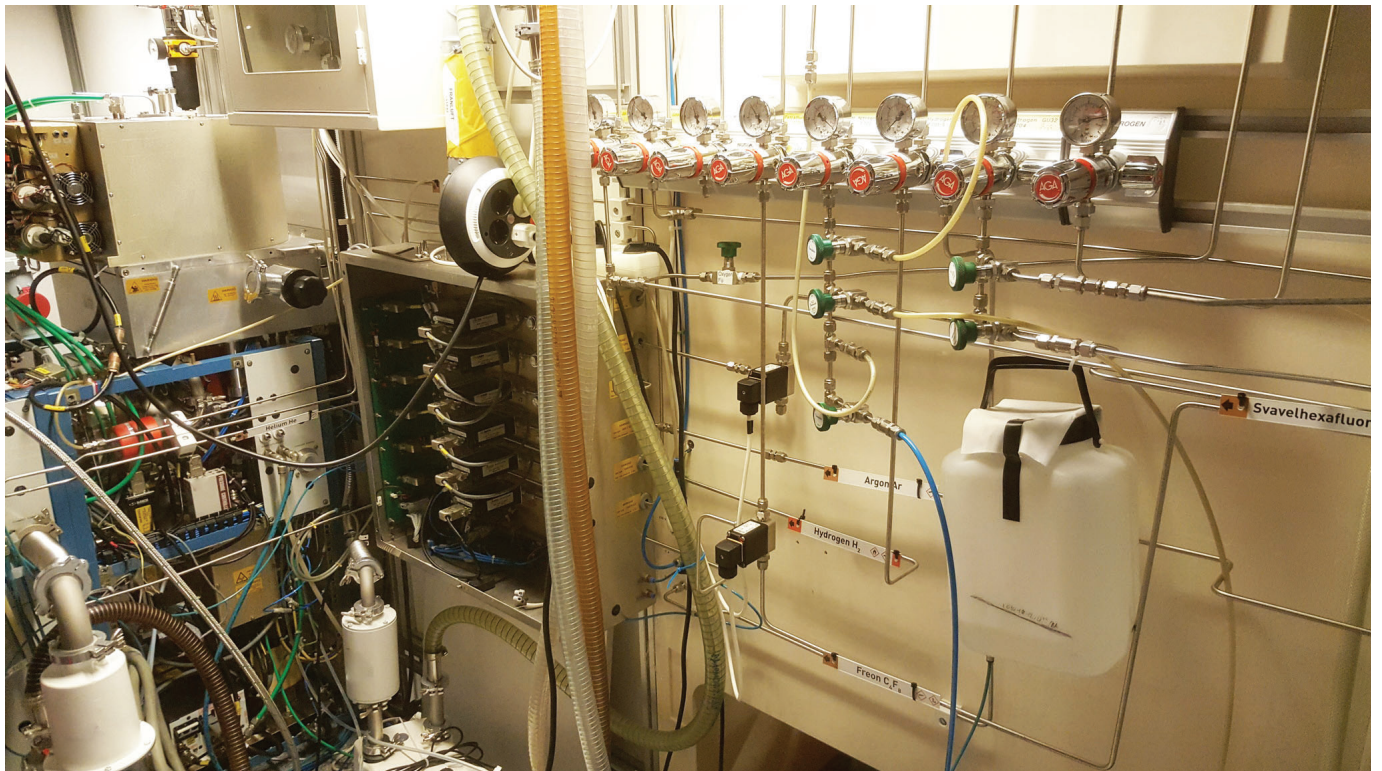
QUICK
LEAD TIMES



QUALITY
EQUIPMENT



COMPETITIVE
PRICING



Interested parties may contact Bridge Tronic Global for additional information at +1 949.396.1395 or sales@bridgetronic.com



QUICK
LEAD TIMES



QUALITY
EQUIPMENT



COMPETITIVE
PRICING



Interested parties may contact Bridge Tronic Global for additional information at +1 949.396.1395 or sales@bridgetronic.com



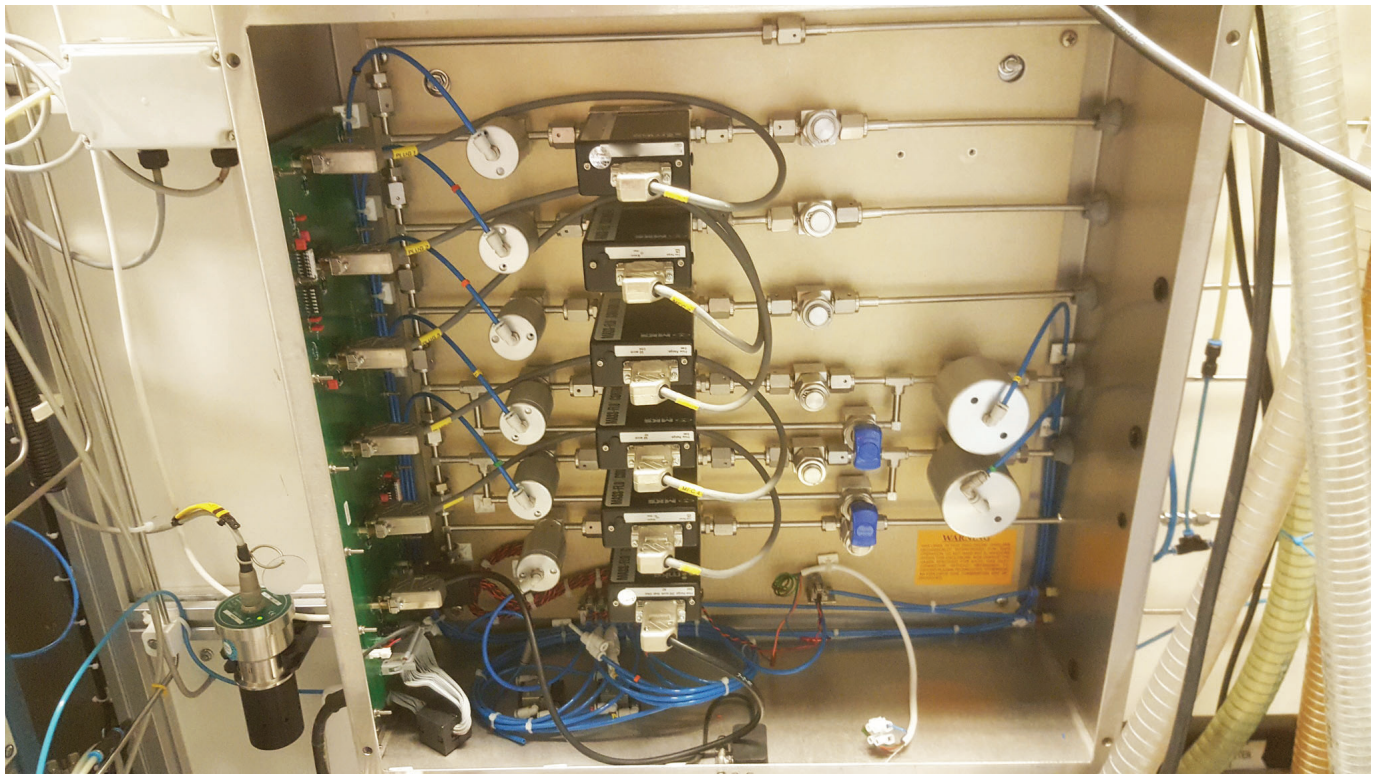
QUICK
LEAD TIMES



QUALITY
EQUIPMENT



COMPETITIVE
PRICING



Interested parties may contact Bridge Tronic Global for additional information at +1 949.396.1395 or sales@bridgetronic.com



QUICK
LEAD TIMES



QUALITY
EQUIPMENT



COMPETITIVE
PRICING



Interested parties may contact Bridge Tronic Global for additional information at +1 949.396.1395 or sales@bridgetronic.com



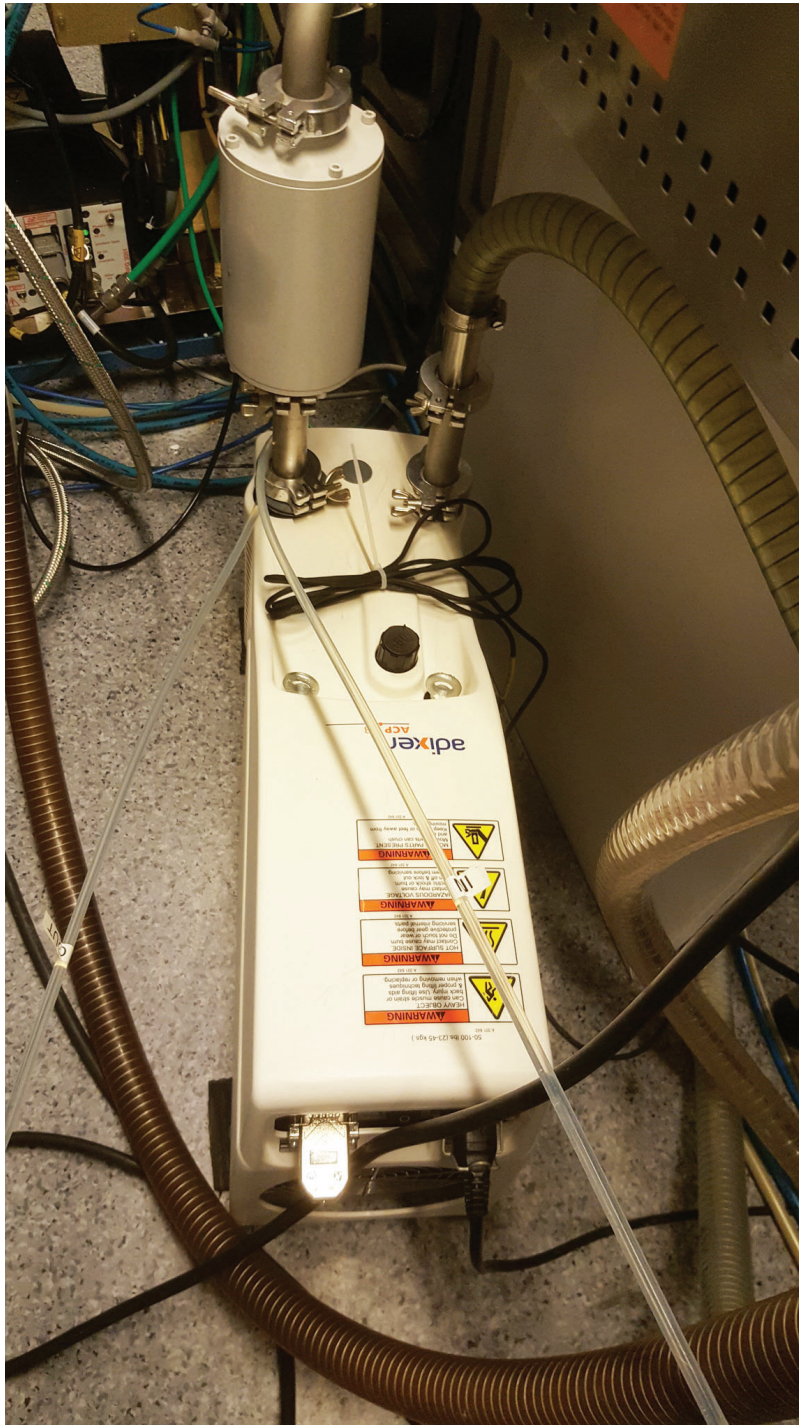
QUICK
LEAD TIMES



QUALITY
EQUIPMENT



COMPETITIVE
PRICING



Interested parties may contact Bridge Tronic Global for additional information at +1 949.396.1395 or sales@bridgetronic.com



QUICK
LEAD TIMES



QUALITY
EQUIPMENT



COMPETITIVE
PRICING



Interested parties may contact Bridge Tronic Global for additional information at +1 949.396.1395 or sales@bridgetronic.com



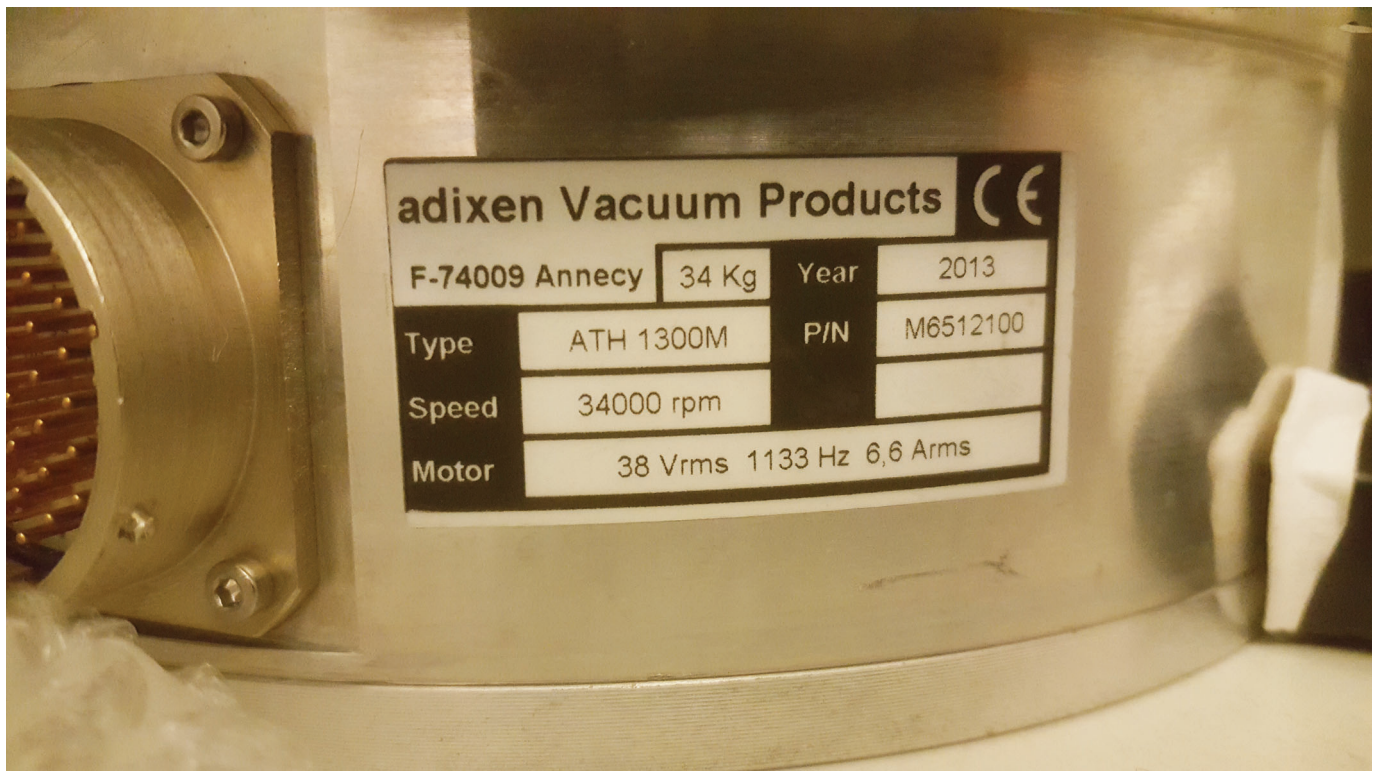
QUICK
LEAD TIMES



QUALITY
EQUIPMENT



COMPETITIVE
PRICING



Interested parties may contact Bridge Tronic Global for additional information at +1 949.396.1395 or sales@bridgetronic.com



QUICK
LEAD TIMES



QUALITY
EQUIPMENT



COMPETITIVE
PRICING