

Hitachi S-3400 N Variable Pressure SEM

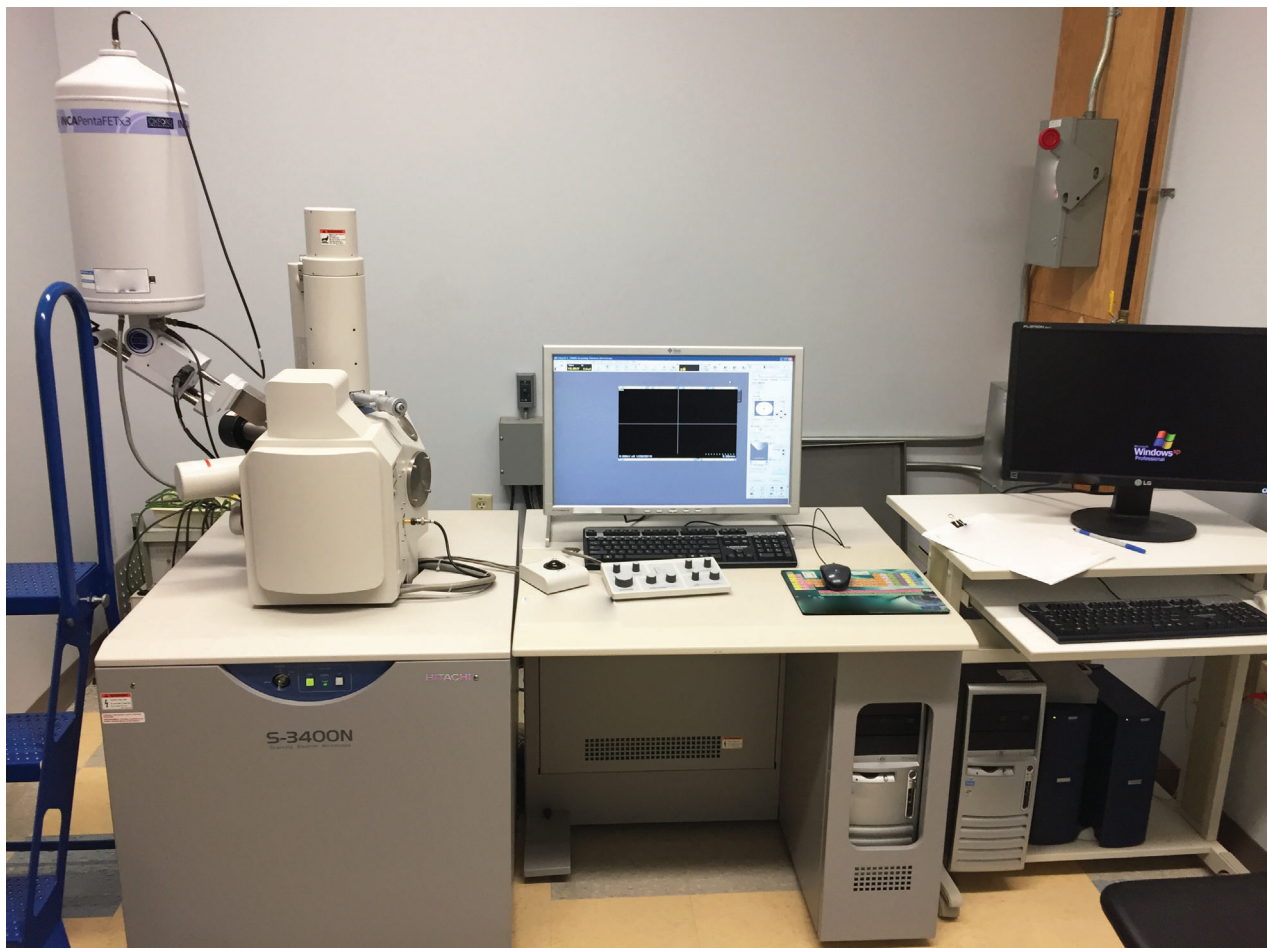
Asset ID: 44539

Configuration Info:

Hitachi S-3400 N Variable Pressure SEM

- comes with EDAX

2007 Vintage



More Photos on Following Pages

To our knowledge, the information contained in this data sheet is accurate, but it may contain errors and we do not warrant the completeness or accuracy of this data.

Interested parties may contact Bridge Tronic Global for additional information at +1 949.396.1395 or sales@bridgetronic.com

Visit our website at: www.bridgetronic.com



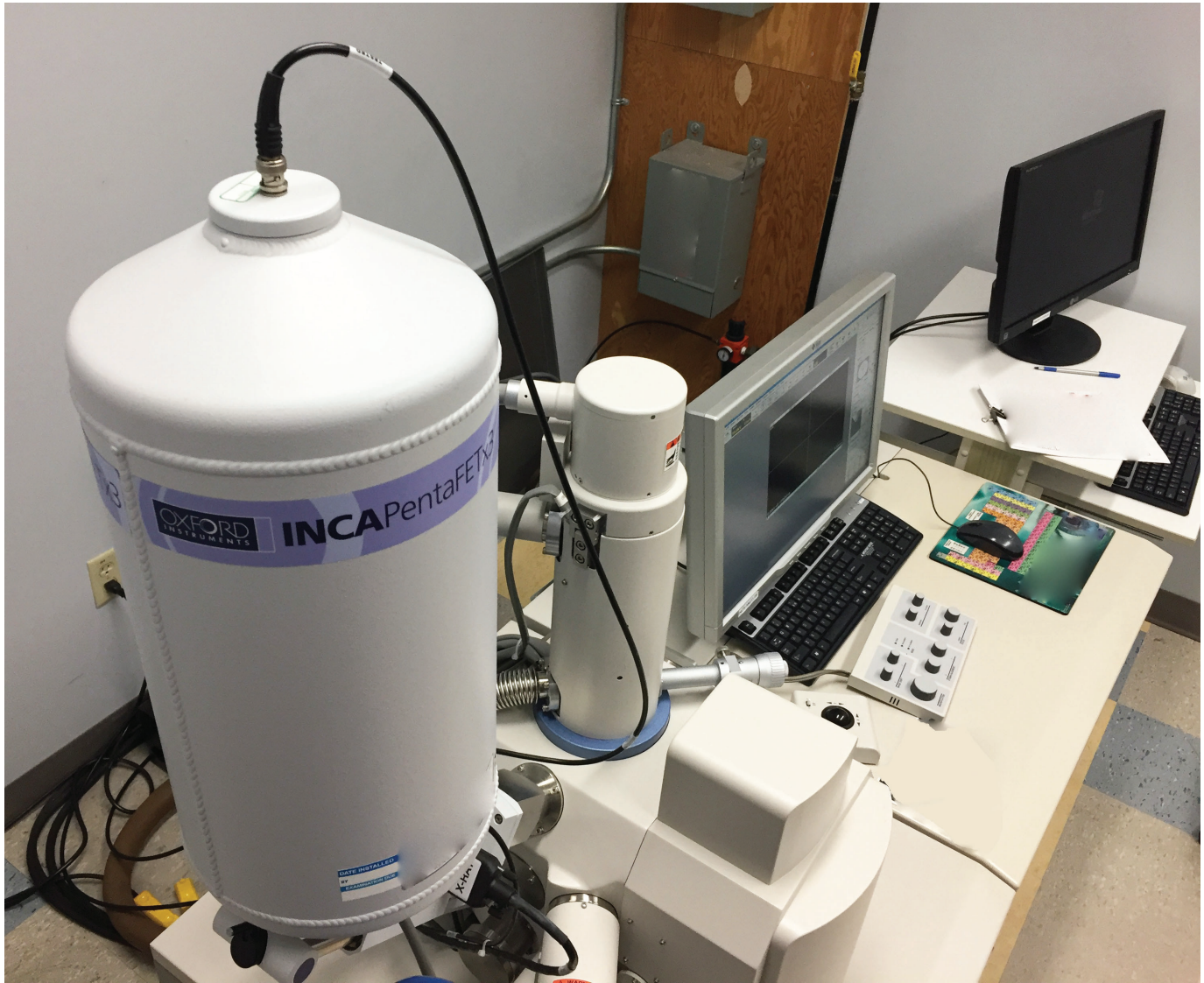
QUICK
LEAD TIMES



QUALITY
EQUIPMENT



COMPETITIVE
PRICING



Interested parties may contact Bridge Tronic Global for additional information at +1 949.396.1395 or sales@bridgetronic.com



QUICK
LEAD TIMES



QUALITY
EQUIPMENT



COMPETITIVE
PRICING

Technical Specifications Hitachi Variable Pressure S3400 SEM

Hitachi S3400 SEM

This well equipped system offers users enhanced performance and capabilities including: high vacuum mode with both backscattered and secondary electron detectors; EDAX (X-ray analysis); a Peltier cooled stage for freeze fracture, and high resolution digital images. Variable pressure mode adds a special Environmental Secondary electron detector to the list, allowing semi-wet or oily samples to be imaged without standard SEM processing protocols. Both x-ray analysis and high resolution digital image capture are available in the VP mode.

The system is capable of up to 300,000x magnification with better than 5nm resolution at 30kV. It can handle specimens up to 200mm in diameter and offers fast chamber pump down times for quick specimen exchange.

Hitachi S-3400N Variable Pressure SEM Technical Specifications

Magnification	300,000x (Theoretical)
Variable Pressure vacuum system	-Turbomolecular pump for reliable, efficient, (90 sec) pump down time. -Environmental secondary electron detection in variable pressure mode (to 280 Pa) allows imaging of wet or oily or uncoated samples without standard SEM processing.
Accelerating voltage	0.1 to 30 KV
Resolution	Better than 5nm resolution at 30 kV
Stage	Handles specimens up to 200 mm in diameter on fully eucentric, 5 axis, digitally controlled motorized stage
Image Capture	-High resolution digital image capture. -Secondary Electron Detection -Backscatter detection - X-Ray Analysis -Topographic, 3D and Composition modes of imaging
Other	-Cryostage for frozen samples -INCA EDAX system for X-Ray analysis and materials characterization

Interested parties may contact Bridge Tronic Global for additional information at +1 949.396.1395 or sales@bridgetronic.com



QUICK
LEAD TIMES



QUALITY
EQUIPMENT



COMPETITIVE
PRICING



Interested parties may contact Bridge Tronic Global for additional information at +1 949.396.1395 or sales@bridgetronic.com



QUICK
LEAD TIMES



QUALITY
EQUIPMENT



COMPETITIVE
PRICING