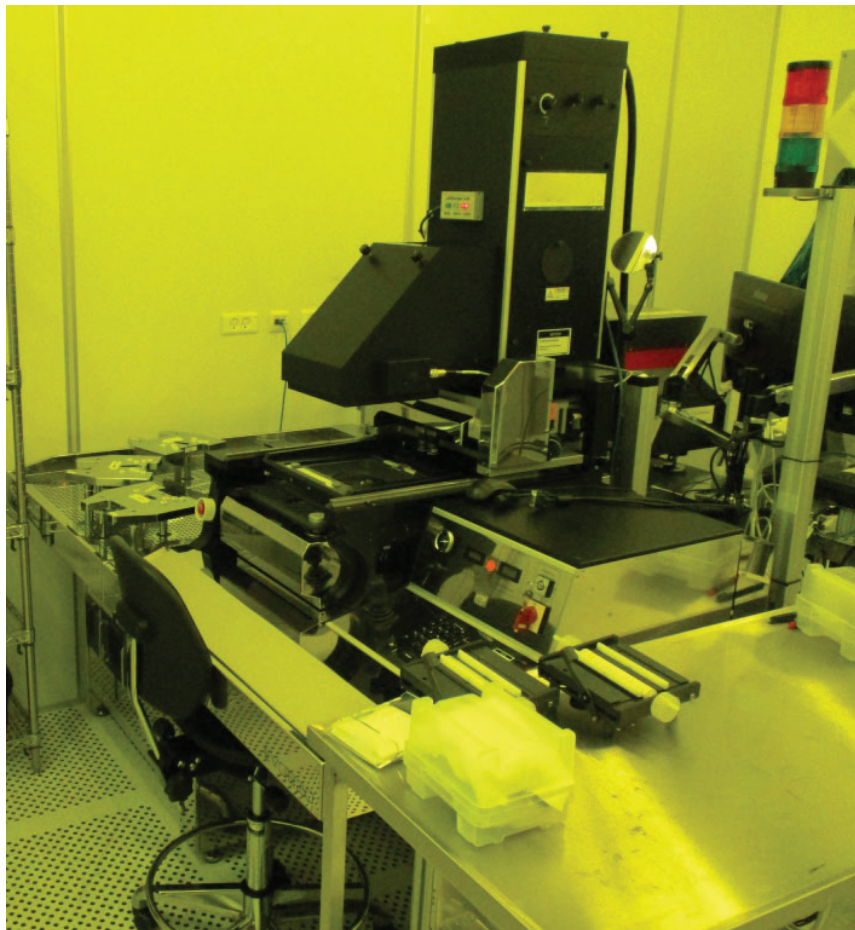


EVG 620 Mask Aligner

Asset ID: 44238

Configuration:

EVG 620 Mask Aligner
- Cassette Loader
2006 Vintage



More Photos on Following Pages

To our knowledge, the information contained in this data sheet is accurate, but it may contain errors and we do not warrant the completeness or accuracy of this data.

Interested parties may contact Bridge Tronic Global for additional information at +1 949.396.1395 or sales@bridgetronic.com

Visit our website at: www.bridgetronic.com



QUICK
LEAD TIMES



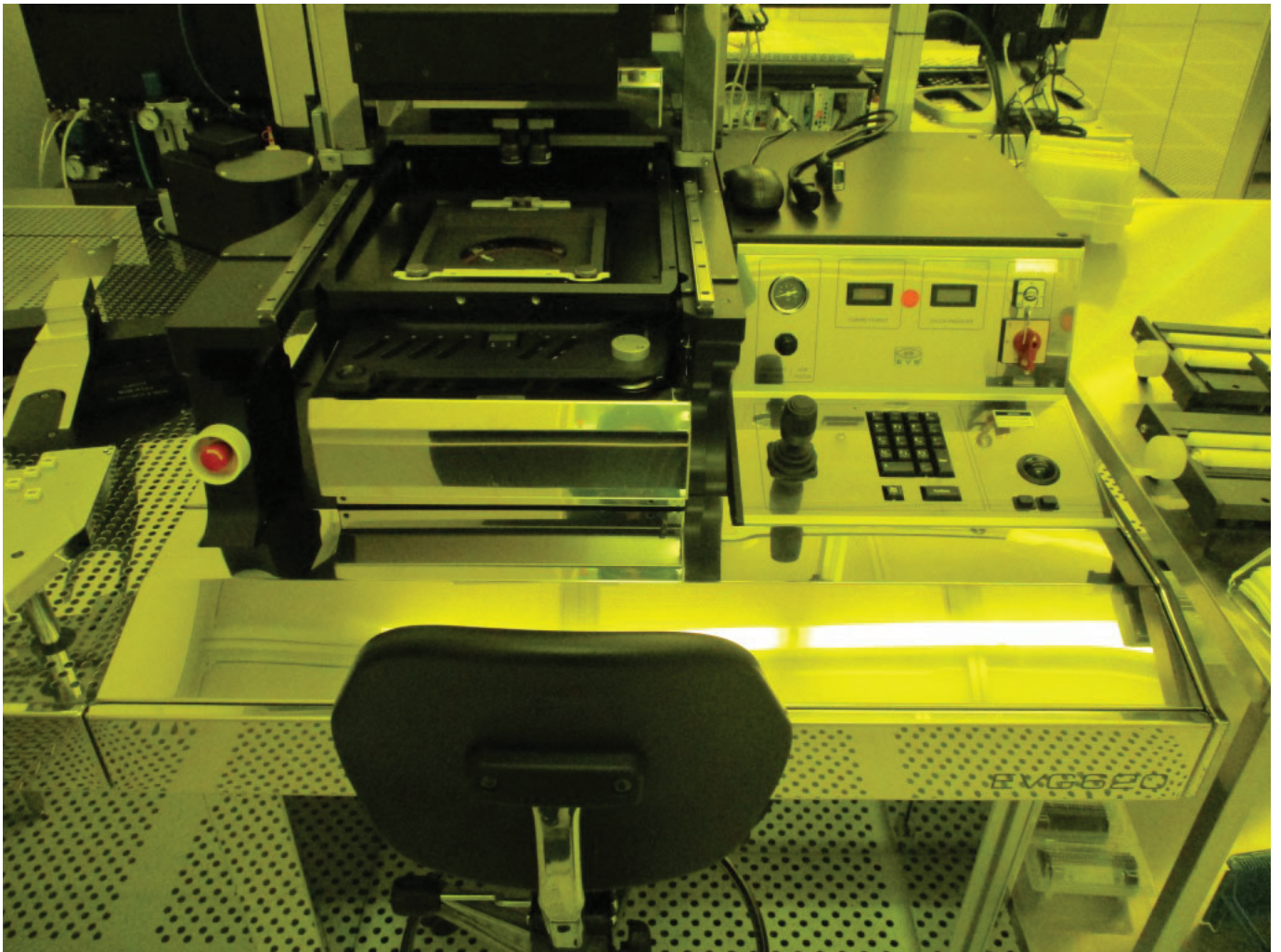
QUALITY
EQUIPMENT



COMPETITIVE
PRICING

BT Bridge Tronic

— G L O B A L —



Interested parties may contact Bridge Tronic Global for additional information at +1 949.396.1395 or sales@bridgetronic.com



QUICK
LEAD TIMES

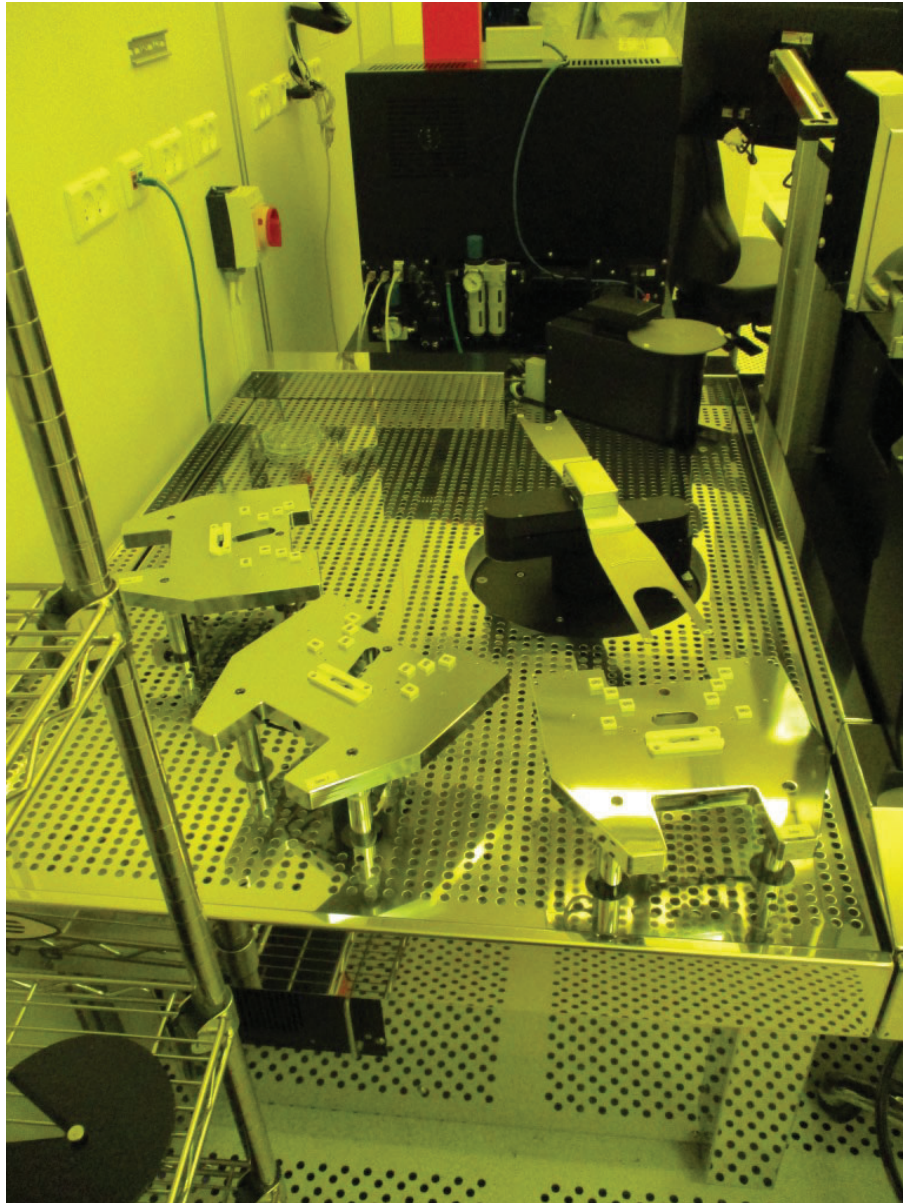


QUALITY
EQUIPMENT



COMPETITIVE
PRICING

1001 W 17th Street, Suite B | Costa Mesa, CA 92627 USA | Office: +1 949.396.1395



Interested parties may contact Bridge Tronic Global for additional information at +1 949.396.1395 or sales@bridgetronic.com



QUICK
LEAD TIMES



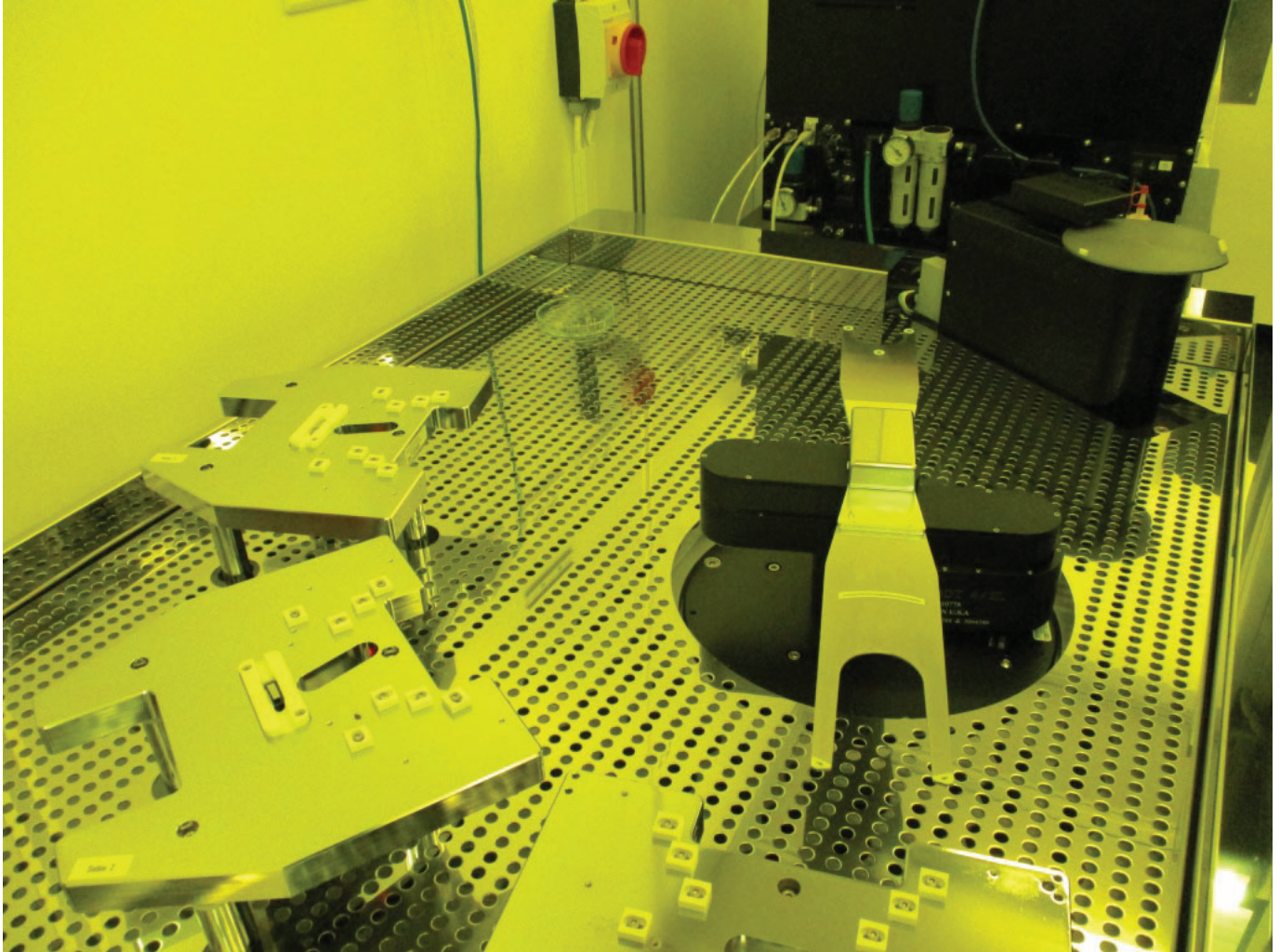
QUALITY
EQUIPMENT



COMPETITIVE
PRICING

BT Bridge Tronic

— G L O B A L —



Interested parties may contact Bridge Tronic Global for additional information at +1 949.396.1395 or sales@bridgetronic.com



QUICK
LEAD TIMES

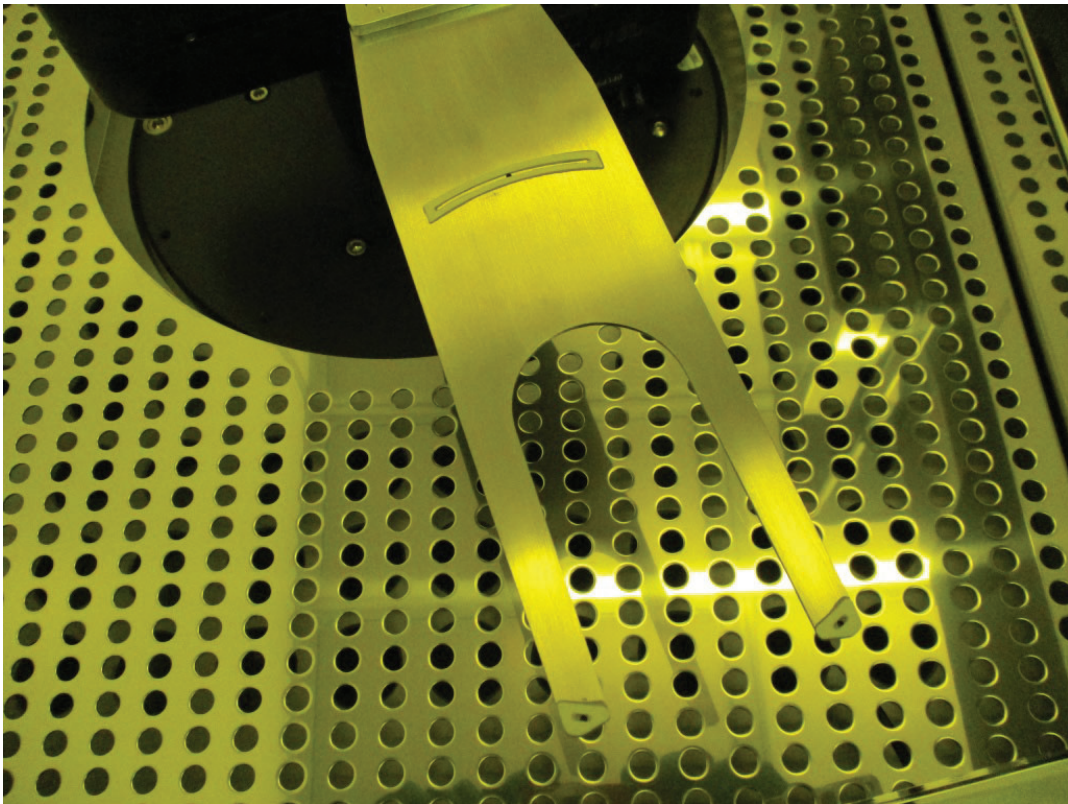


QUALITY
EQUIPMENT



COMPETITIVE
PRICING

1001 W 17th Street, Suite B | Costa Mesa, CA 92627 USA | Office: +1 949.396.1395



Interested parties may contact Bridge Tronic Global for additional information at +1 949.396.1395 or sales@bridgetronic.com



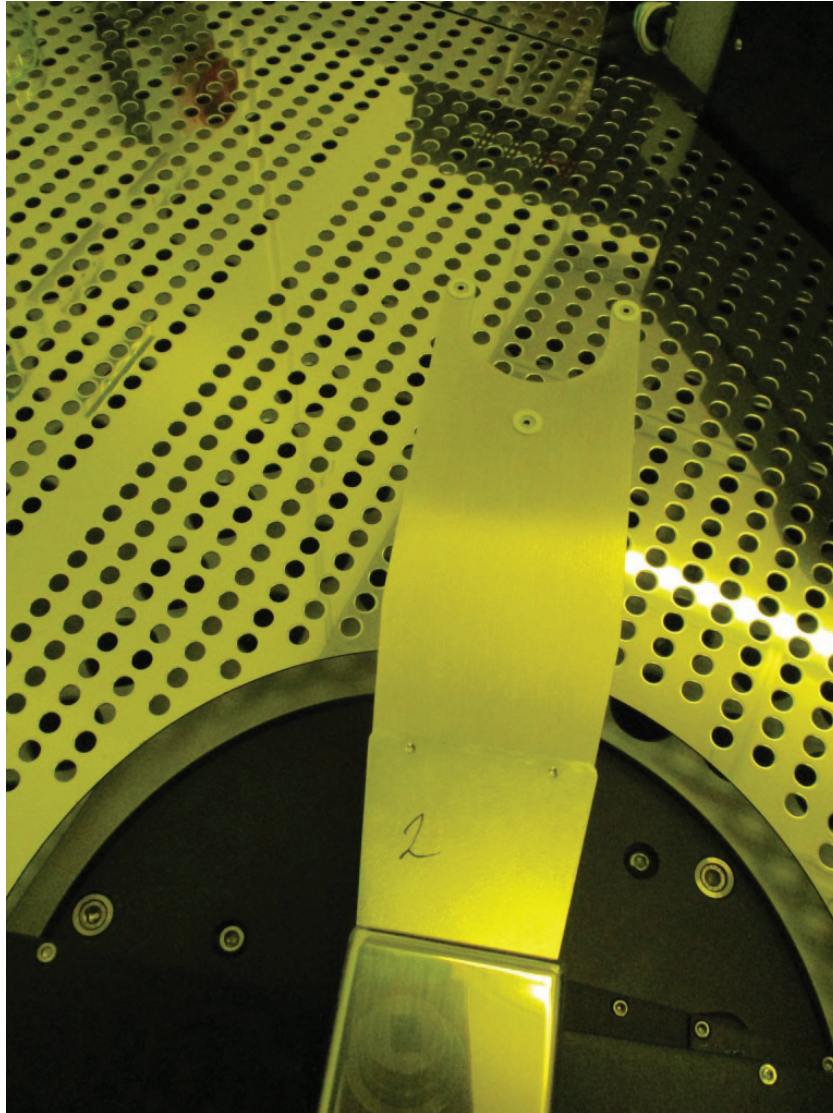
QUICK
LEAD TIMES



QUALITY
EQUIPMENT



COMPETITIVE
PRICING



Interested parties may contact Bridge Tronic Global for additional information at +1 949.396.1395 or sales@bridgetronic.com



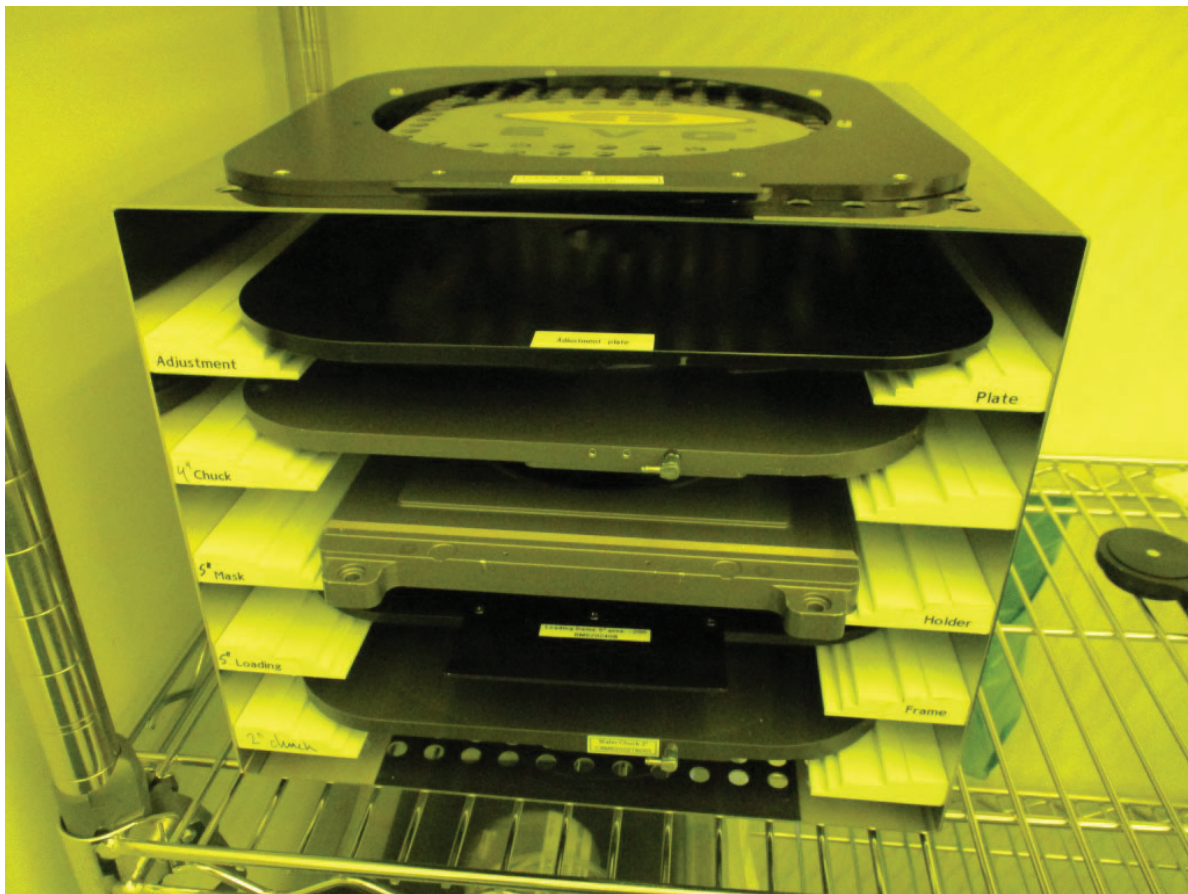
QUICK
LEAD TIMES



QUALITY
EQUIPMENT



COMPETITIVE
PRICING



Interested parties may contact Bridge Tronic Global for additional information at +1 949.396.1395 or sales@bridgetronic.com



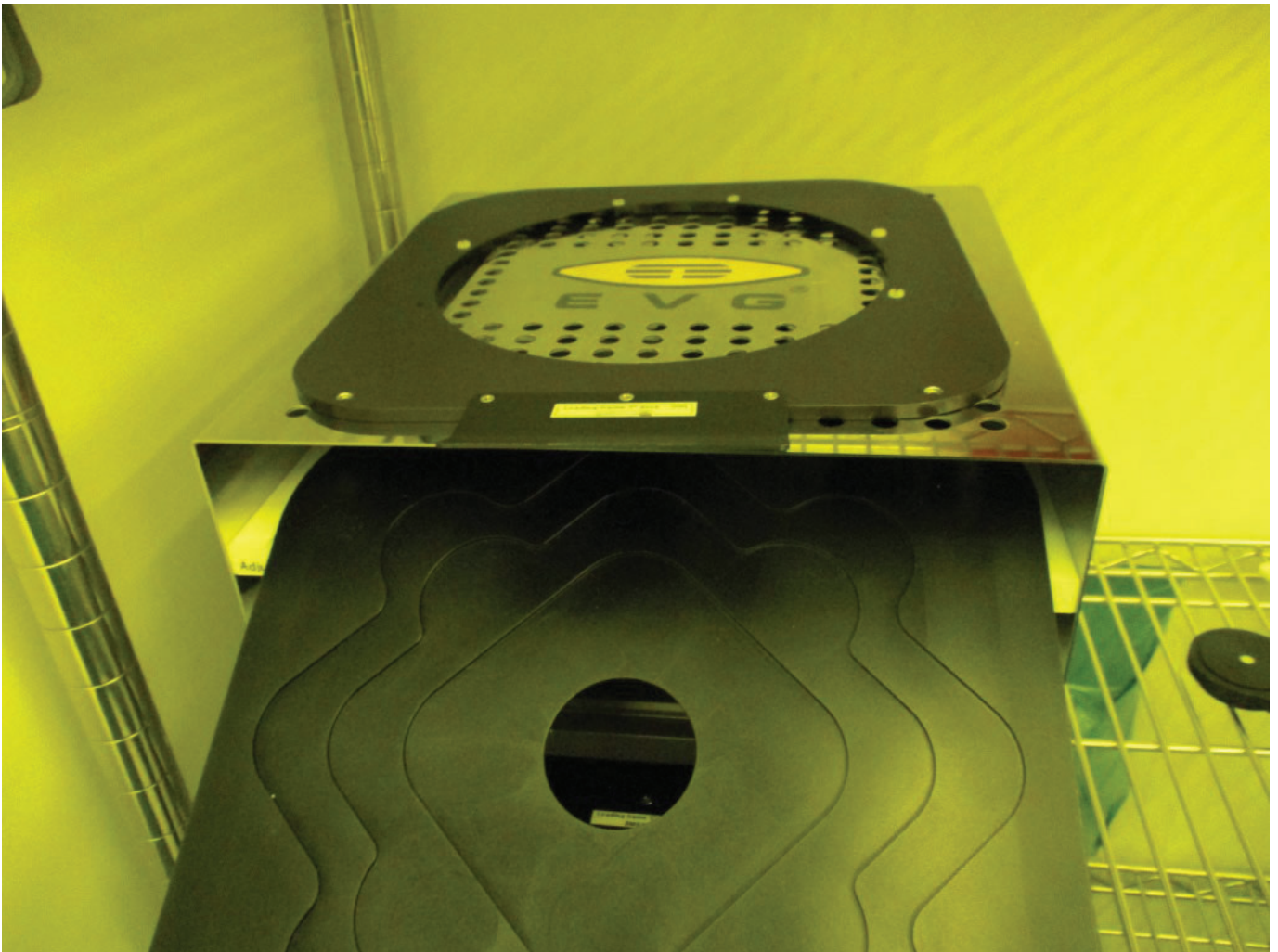
QUICK
LEAD TIMES



QUALITY
EQUIPMENT



COMPETITIVE
PRICING



Interested parties may contact Bridge Tronic Global for additional information at +1 949.396.1395 or sales@bridgetronic.com



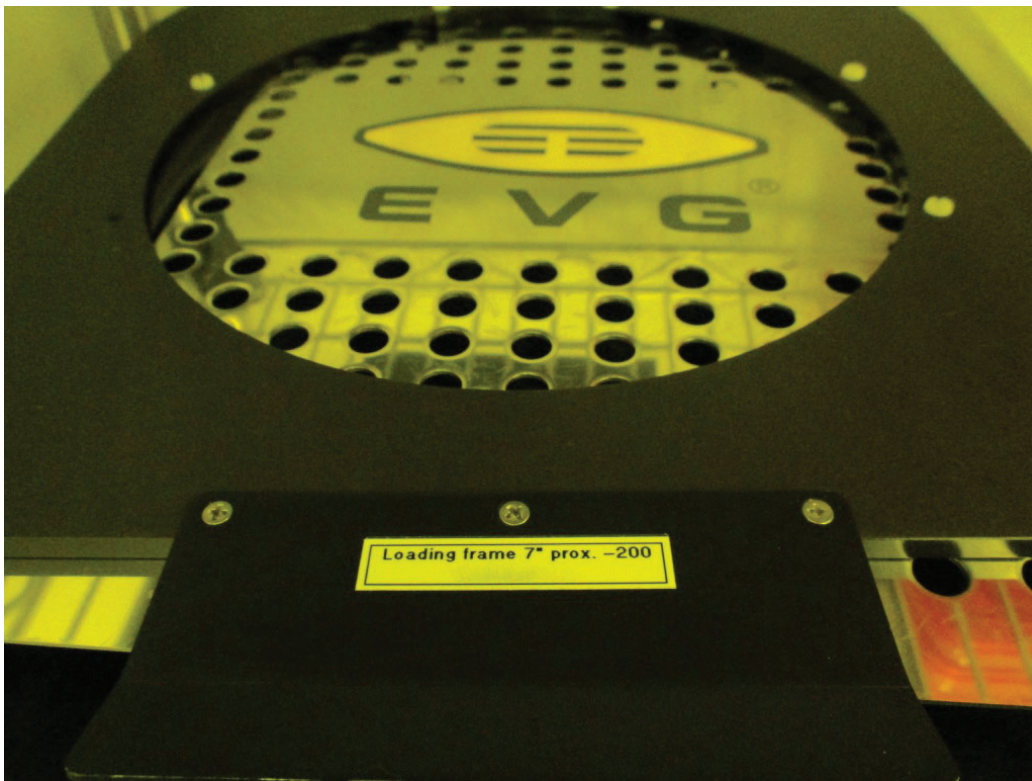
QUICK
LEAD TIMES



QUALITY
EQUIPMENT



COMPETITIVE
PRICING



Interested parties may contact Bridge Tronic Global for additional information at +1 949.396.1395 or sales@bridgetronic.com



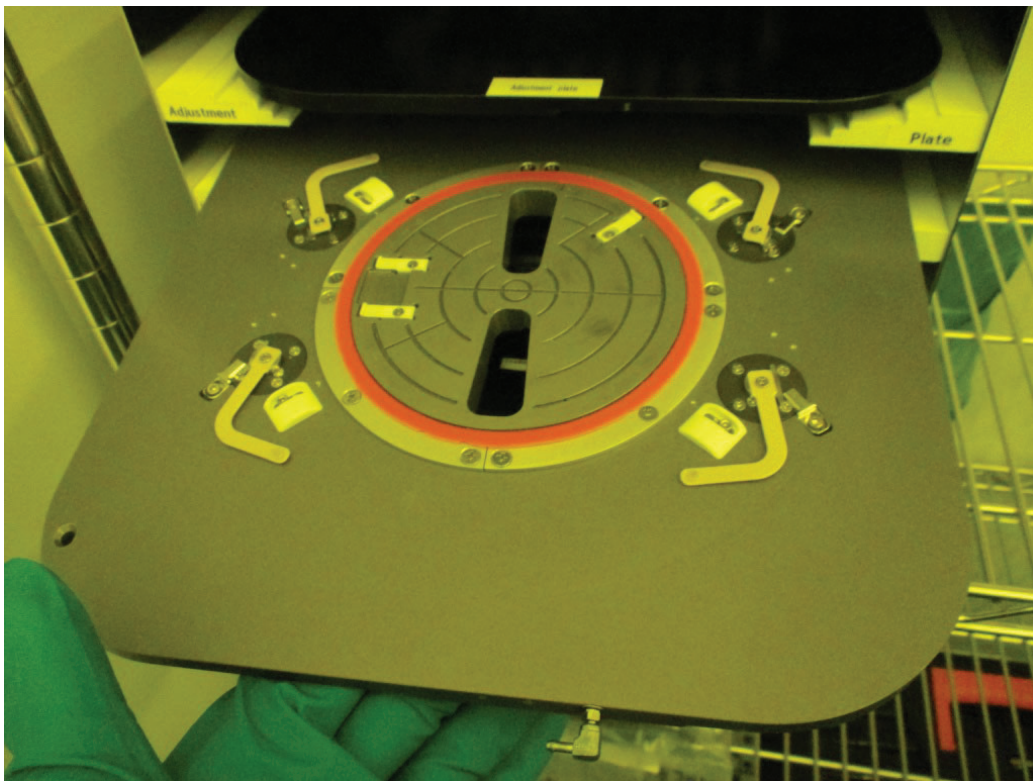
QUICK
LEAD TIMES



QUALITY
EQUIPMENT



COMPETITIVE
PRICING



Interested parties may contact Bridge Tronic Global for additional information at +1 949.396.1395 or sales@bridgetronic.com



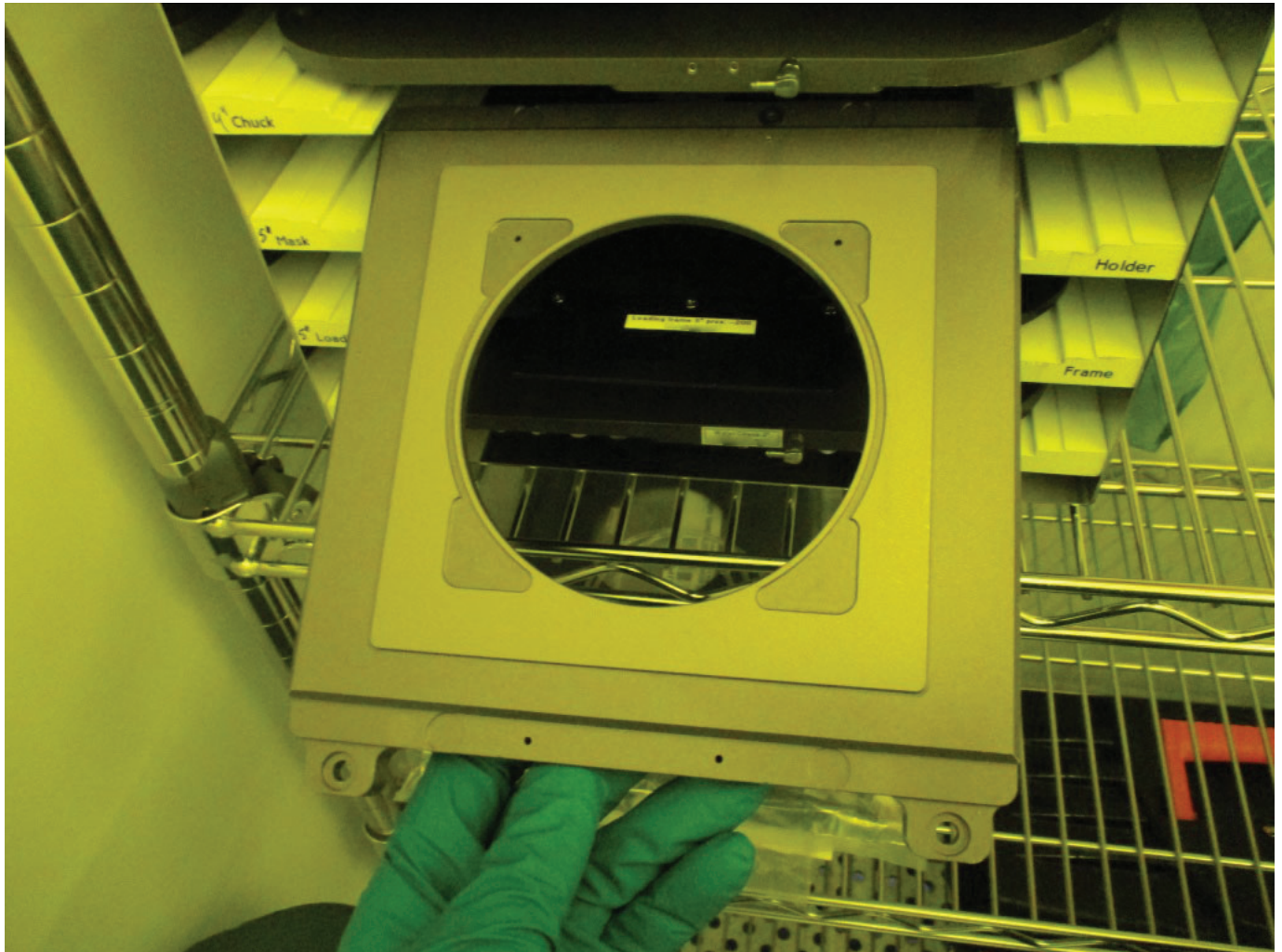
QUICK
LEAD TIMES



QUALITY
EQUIPMENT



COMPETITIVE
PRICING



Interested parties may contact Bridge Tronic Global for additional information at +1 949.396.1395 or sales@bridgetronic.com



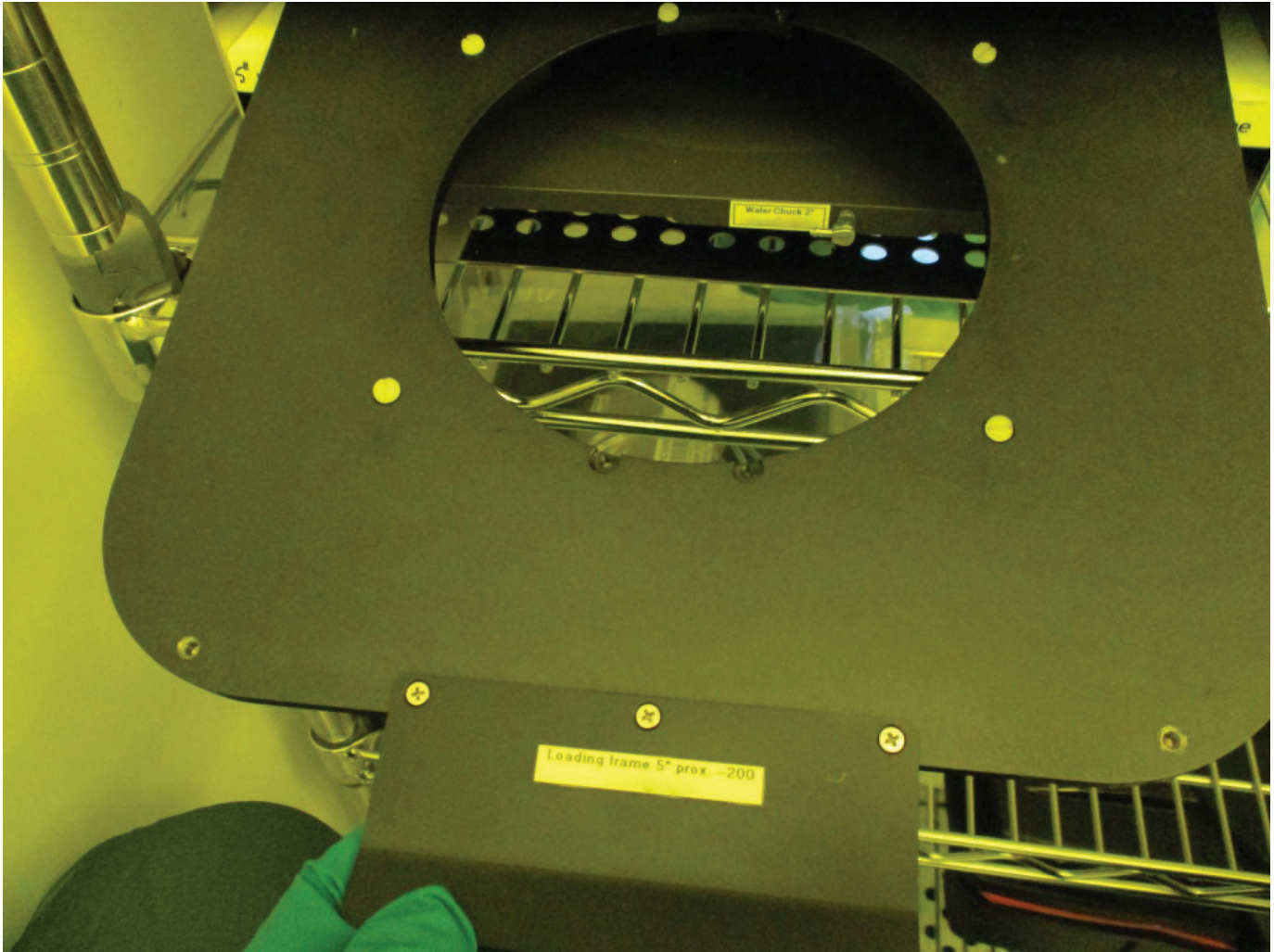
QUICK
LEAD TIMES



QUALITY
EQUIPMENT



COMPETITIVE
PRICING



Interested parties may contact Bridge Tronic Global for additional information at +1 949.396.1395 or sales@bridgetronic.com



QUICK
LEAD TIMES



QUALITY
EQUIPMENT



COMPETITIVE
PRICING



Interested parties may contact Bridge Tronic Global for additional information at +1 949.396.1395 or sales@bridgetronic.com



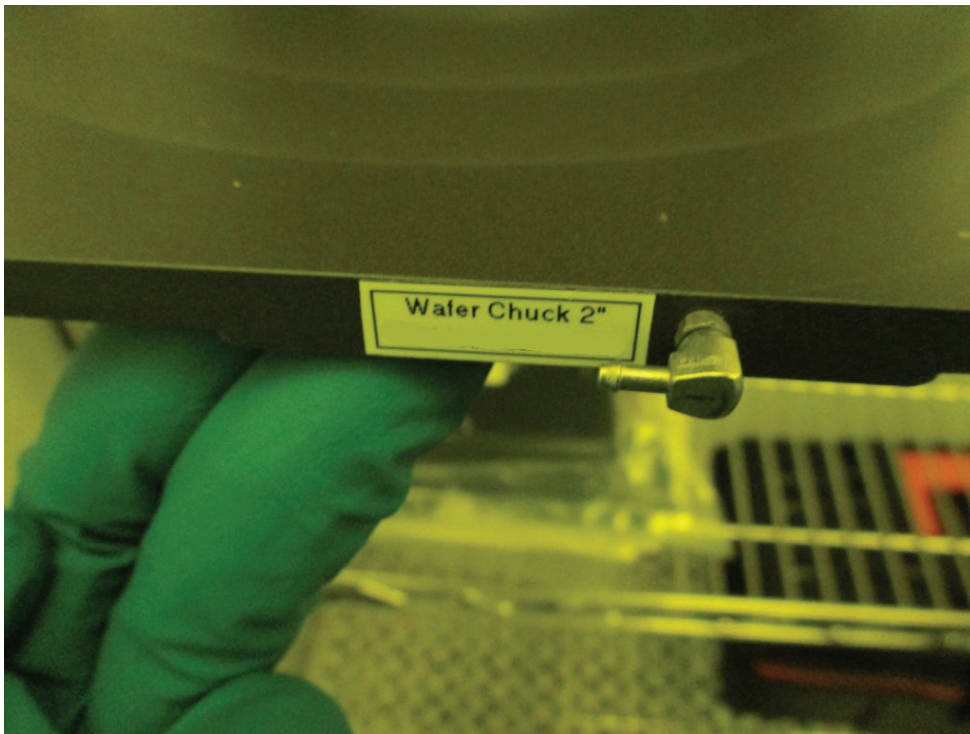
QUICK
LEAD TIMES



QUALITY
EQUIPMENT



COMPETITIVE
PRICING



Interested parties may contact Bridge Tronic Global for additional information at +1 949.396.1395 or sales@bridgetronic.com



QUICK
LEAD TIMES



QUALITY
EQUIPMENT



COMPETITIVE
PRICING

ion		
Diagram number	EVG6200278	
Year of construction	2006	
ical Voltage	230V, 1~, N, PE - 3wire	
Frequency	50/60Hz	
Power consumption	1,6 kW	
Full load current rating	6,9A	
Largest current rating	6,9A	
Breaker size / AIC	10A	/ 10kA
	<i>overcurrent protection provided at machine terminals</i>	
cuum Compressed air (CDA)	6 bar / 87 psi	
Nitrogen or CDA	6 bar / 87 psi	
Vacuum	<850 mbar / 646 Torr	
Lamphouse	1x	180 m³/h /

Interested parties may contact Bridge Tronic Global for additional information at +1 949.396.1395 or sales@bridgetronic.com



QUICK
LEAD TIMES



QUALITY
EQUIPMENT



COMPETITIVE
PRICING