

Cascade PS 21 Parametric Autoprober System, 8"

Asset ID: 21690

Configuration Details:

Cascade PS 21 Parametric Autoprober System, 8"

- Dimensions 60 x 48 x 60"
- Weight 400

Included:

- Optem HF Video microscope
- Panasonic Camera Controller
- Dual Illumination Sources
- Dual LCD Monitors



More Photos on Following Pages

To our knowledge, the information contained in this data sheet is accurate, but it may contain errors and we do not warrant the completeness or accuracy of this data.

Interested parties may contact Bridge Tronic Global for additional information at +1 949.396.1395 or sales@bridgetronic.com



QUICK
LEAD TIMES



QUALITY
EQUIPMENT



COMPETITIVE
PRICING



Interested parties may contact Bridge Tronic Global for additional information at +1 949.396.1395 or sales@bridgetronic.com



QUICK
LEAD TIMES



QUALITY
EQUIPMENT



COMPETITIVE
PRICING



Interested parties may contact Bridge Tronic Global for additional information at +1 949.396.1395 or sales@bridgetronic.com



QUICK
LEAD TIMES



QUALITY
EQUIPMENT



COMPETITIVE
PRICING



Interested parties may contact Bridge Tronic Global for additional information at +1 949.396.1395 or sales@bridgetronic.com



QUICK
LEAD TIMES



QUALITY
EQUIPMENT



COMPETITIVE
PRICING



Interested parties may contact Bridge Tronic Global for additional information at +1 949.396.1395 or sales@bridgetronic.com



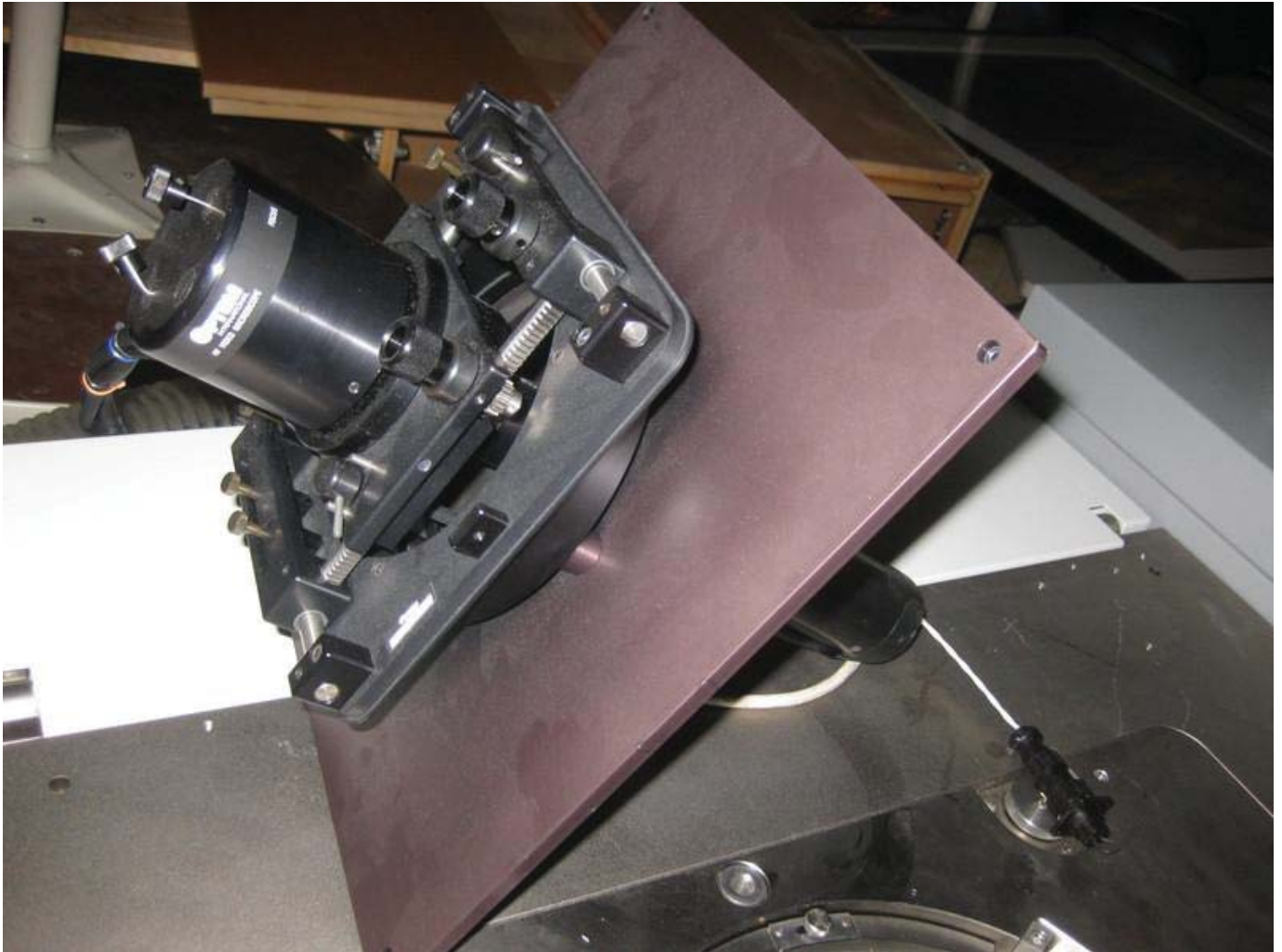
QUICK
LEAD TIMES



QUALITY
EQUIPMENT



COMPETITIVE
PRICING



Interested parties may contact Bridge Tronic Global for additional information at +1 949.396.1395 or sales@bridgetronic.com



QUICK
LEAD TIMES



QUALITY
EQUIPMENT



COMPETITIVE
PRICING



Interested parties may contact Bridge Tronic Global for additional information at +1 949.396.1395 or sales@bridgetronic.com



QUICK
LEAD TIMES



QUALITY
EQUIPMENT



COMPETITIVE
PRICING



Interested parties may contact Bridge Tronic Global for additional information at +1 949.396.1395 or sales@bridgetronic.com



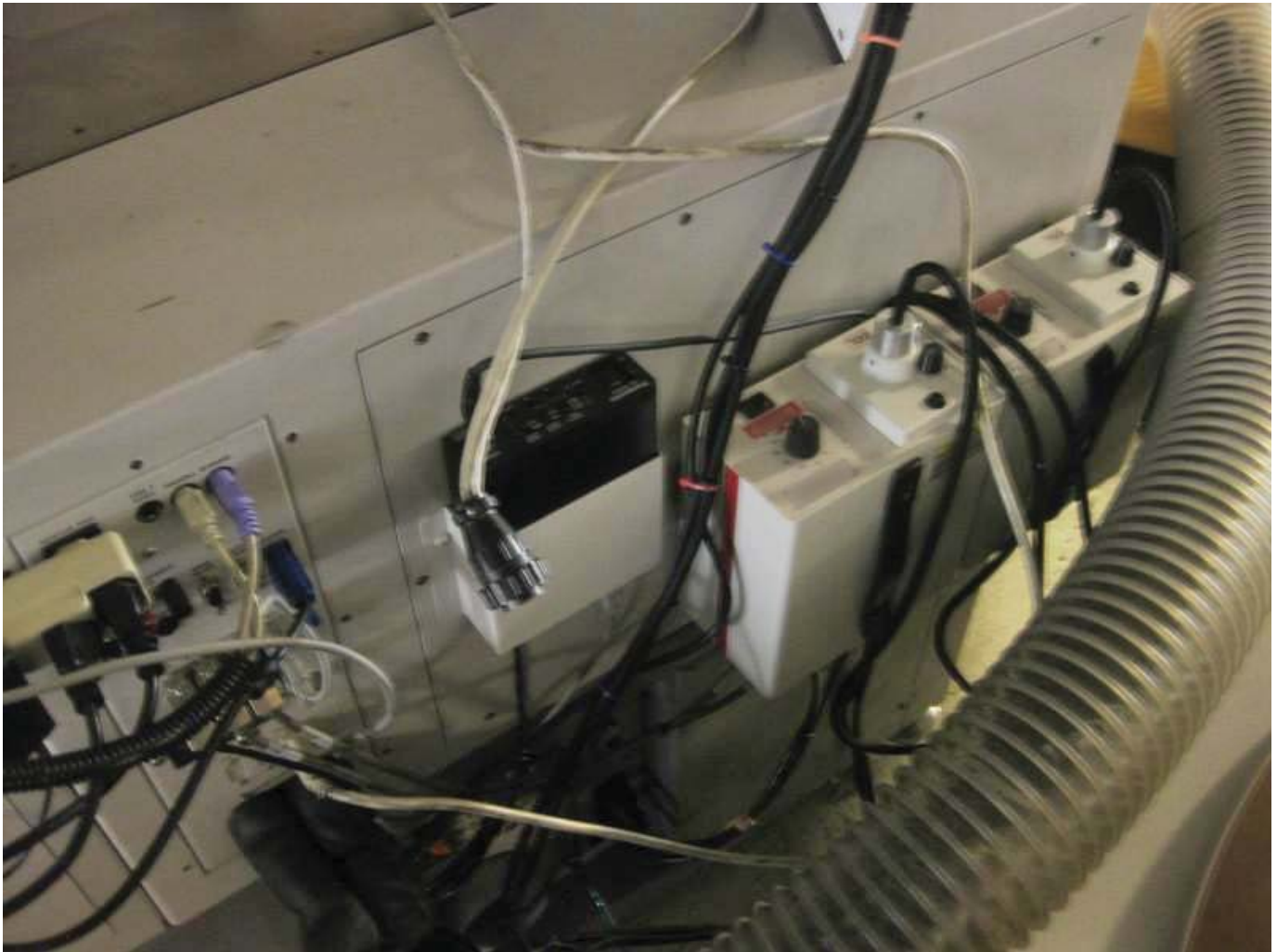
QUICK
LEAD TIMES



QUALITY
EQUIPMENT



COMPETITIVE
PRICING



Interested parties may contact Bridge Tronic Global for additional information at +1 949.396.1395 or sales@bridgetronic.com



QUICK
LEAD TIMES



QUALITY
EQUIPMENT



COMPETITIVE
PRICING



Interested parties may contact Bridge Tronic Global for additional information at +1 949.396.1395 or sales@bridgetronic.com



QUICK
LEAD TIMES



QUALITY
EQUIPMENT



COMPETITIVE
PRICING



Interested parties may contact Bridge Tronic Global for additional information at +1 949.396.1395 or sales@bridgetronic.com



QUICK
LEAD TIMES



QUALITY
EQUIPMENT



COMPETITIVE
PRICING