

## Karl Suss PM 8 Probe Station

Asset ID: 37351

### Original Configuration Sheet when tool was purchased new:

PMB III Analytical Prober base machine	
- Rigid base frame with levelling feet and granite plate	
- Manual X-Y-stage with 200mm x 200mm and super-imposed fine adjustment 10mm X, Y, 9 deg Theta	
- Z-Axis with 10mm Loadstroke	
Probe Head Plate with Vacuum Adaption	
Probe Head Plate with manual height adjustment 40mm	
0.6mm Contact / Separation Stroke	
200 mm Chuck	
Microscope Movement 100 x 100 mm coarse / fine	
Microscope Movement with Lift	
Mitutoyo Microscope Adapter	
Mitutoyo FS 60 FC complete with 2x, 10x, 20x Object.	
Laser Cutter green and UV wavelength	
Mitutoyo Instalation Kit	
Mitutoyo Microscope Retrofit for UV Application	
Objective 50x NUV for UV Application	
Mitutoyo Camery Adapter C-Mount	
High Resolution TV-Camera	
PH 150 Probehead, 8x	
PH 150 Arm, Coax, BNC, 6x	
PH 150 RF arm left / right for 40 GHz RF Probes, 2x	
PH 150 RF arm front/rear for 40 GHz RF Probes, 2x	
PH 150 Vacuum Adapter, 6x	
Picoprobe 40A, 4 x 34 1x	
Probecard Adapter 4.6 x 7-Inch RB adapter	
Anti-Vibration Table	
Vacuum Pump, Double	

### More Photos on Following Pages

To our knowledge, the information contained in this data sheet is accurate, but it may contain errors and we do not warrant the completeness or accuracy of this data.

Interested parties may contact Bridge Tronic Global for additional information at +1 949.396.1395 or sales@bridgetronic.com

Visit our website at: [www.bridgetronic.com](http://www.bridgetronic.com)



QUICK  
LEAD TIMES



QUALITY  
EQUIPMENT



COMPETITIVE  
PRICING



*Interested parties may contact Bridge Tronic Global for additional information at +1 949.396.1395 or [sales@bridgetronic.com](mailto:sales@bridgetronic.com)*



QUICK  
LEAD TIMES



QUALITY  
EQUIPMENT



COMPETITIVE  
PRICING



*Interested parties may contact Bridge Tronic Global for additional information at +1 949.396.1395 or [sales@bridgetronic.com](mailto:sales@bridgetronic.com)*



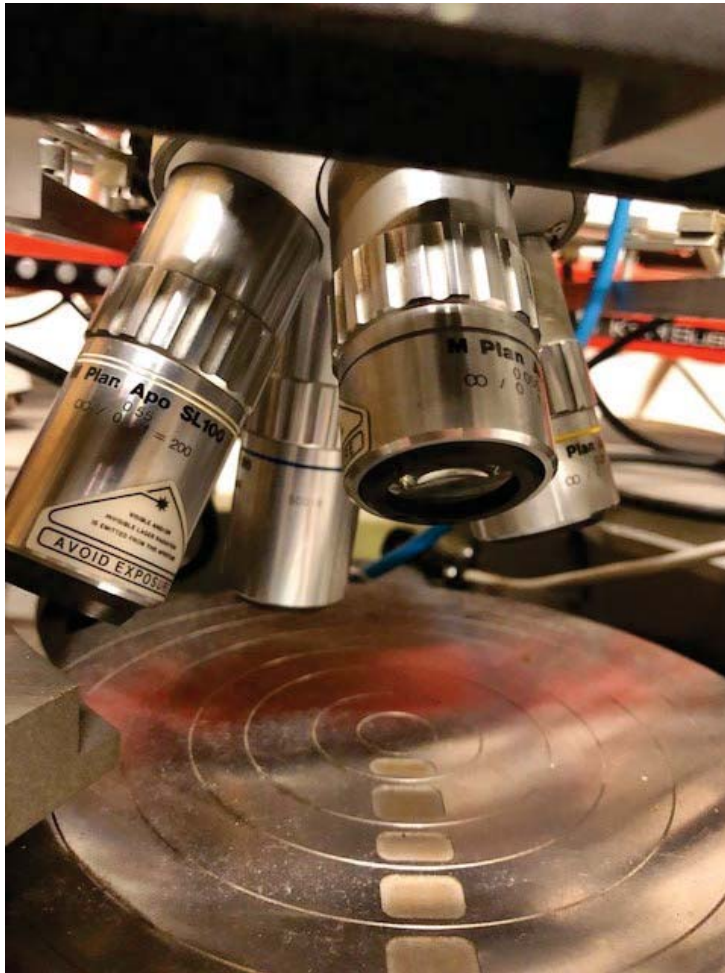
QUICK  
LEAD TIMES



QUALITY  
EQUIPMENT



COMPETITIVE  
PRICING



*Interested parties may contact Bridge Tronic Global for additional information at +1 949.396.1395 or [sales@bridgetronic.com](mailto:sales@bridgetronic.com)*



QUICK  
LEAD TIMES



QUALITY  
EQUIPMENT



COMPETITIVE  
PRICING



*Interested parties may contact Bridge Tronic Global for additional information at +1 949.396.1395 or [sales@bridgetronic.com](mailto:sales@bridgetronic.com)*



QUICK  
LEAD TIMES



QUALITY  
EQUIPMENT



COMPETITIVE  
PRICING



*Interested parties may contact Bridge Tronic Global for additional information at +1 949.396.1395 or [sales@bridgetronic.com](mailto:sales@bridgetronic.com)*



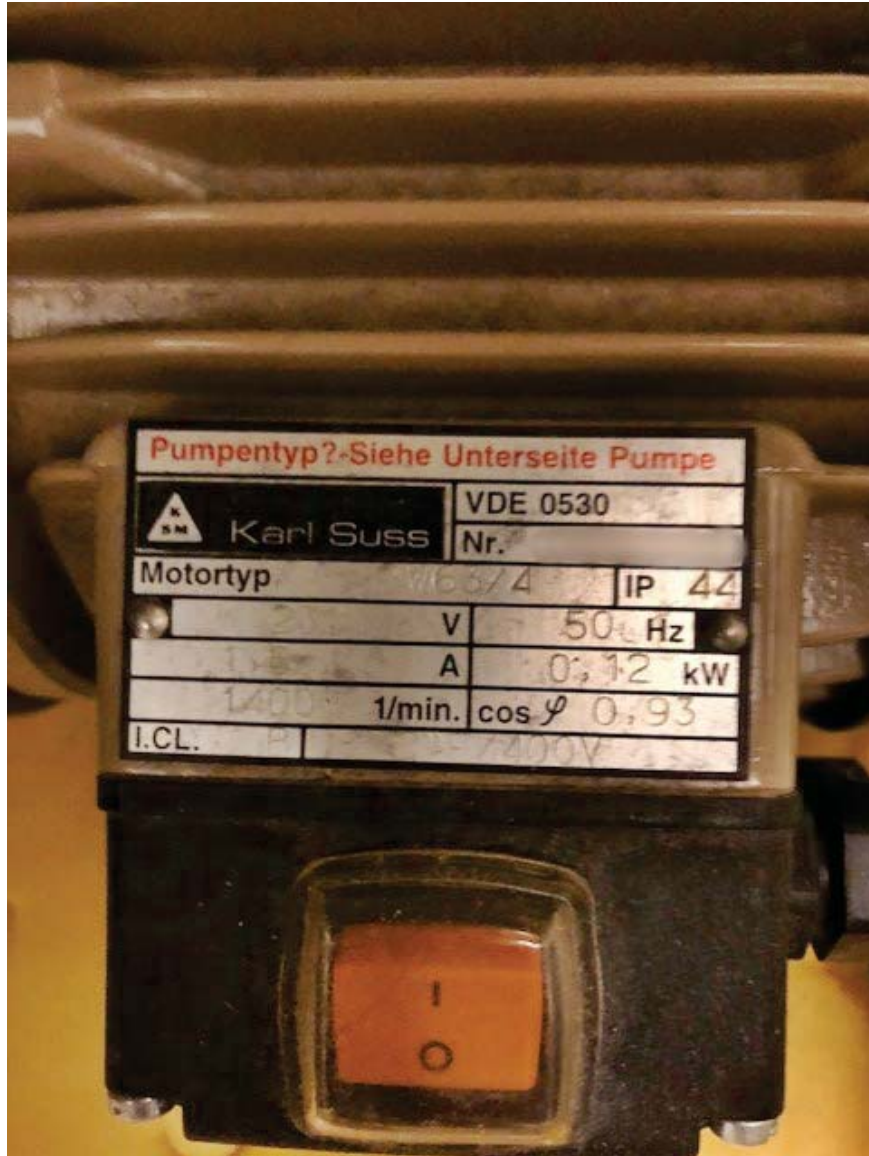
QUICK  
LEAD TIMES



QUALITY  
EQUIPMENT



COMPETITIVE  
PRICING



Interested parties may contact Bridge Tronic Global for additional information at +1 949.396.1395 or [sales@bridgetronic.com](mailto:sales@bridgetronic.com)



QUICK  
LEAD TIMES



QUALITY  
EQUIPMENT



COMPETITIVE  
PRICING



*Interested parties may contact Bridge Tronic Global for additional information at +1 949.396.1395 or [sales@bridgetronic.com](mailto:sales@bridgetronic.com)*



QUICK  
LEAD TIMES



QUALITY  
EQUIPMENT



COMPETITIVE  
PRICING





*Interested parties may contact Bridge Tronic Global for additional information at +1 949.396.1395 or [sales@bridgetronic.com](mailto:sales@bridgetronic.com)*



QUICK  
LEAD TIMES



QUALITY  
EQUIPMENT



COMPETITIVE  
PRICING



Interested parties may contact Bridge Tronic Global for additional information at +1 949.396.1395 or [sales@bridgetronic.com](mailto:sales@bridgetronic.com)



QUICK  
LEAD TIMES



QUALITY  
EQUIPMENT



COMPETITIVE  
PRICING